



EST

2022

# SIGNATURE MANSIONS

EXQUISITE LIVING

## FLOOR PLANS



SIGNATURE  
DEVELOPERS







# THE MAGNOLIA COLLECTION

From every perspective this villa is an individually eye-catching residence creating a home for every member of your family to enjoy. With unmatched panoramic views of the 400m wide golf course, you access your very own horizon vistas from sunrise to sunset.

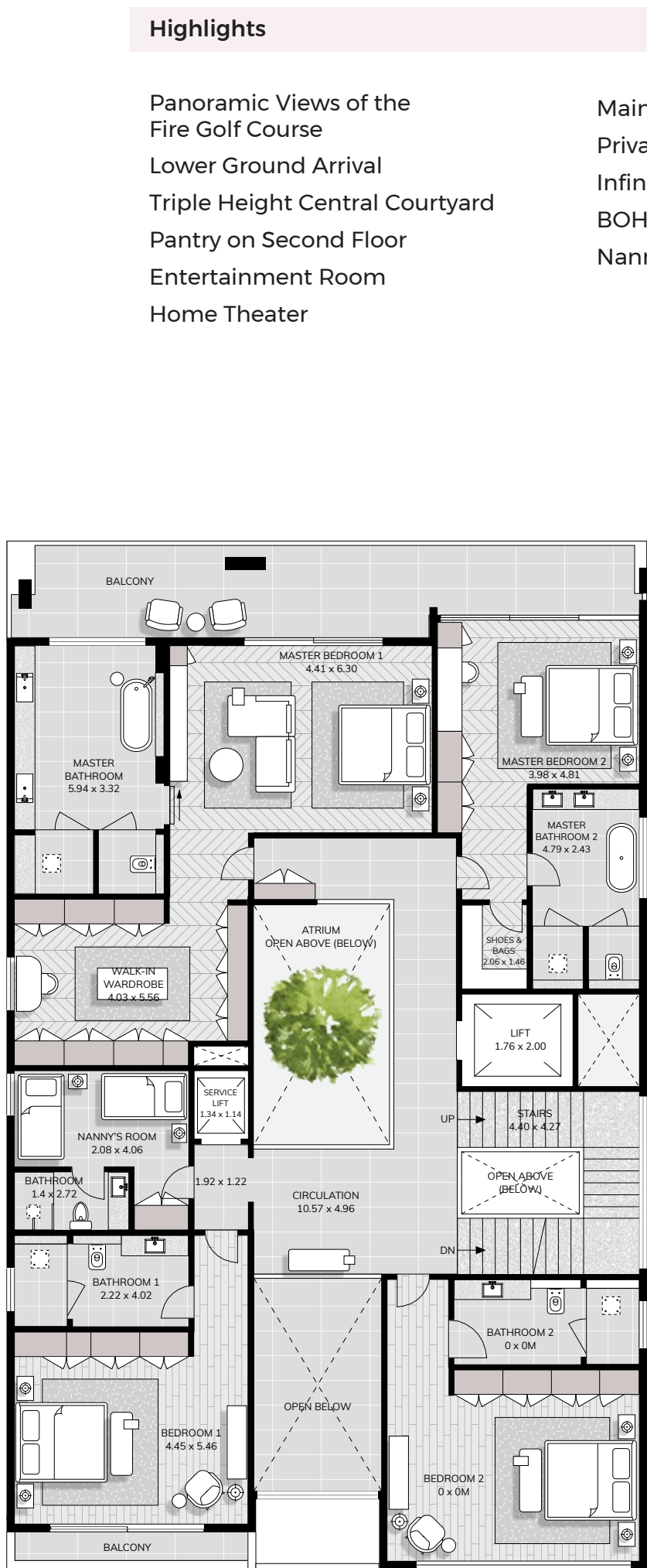
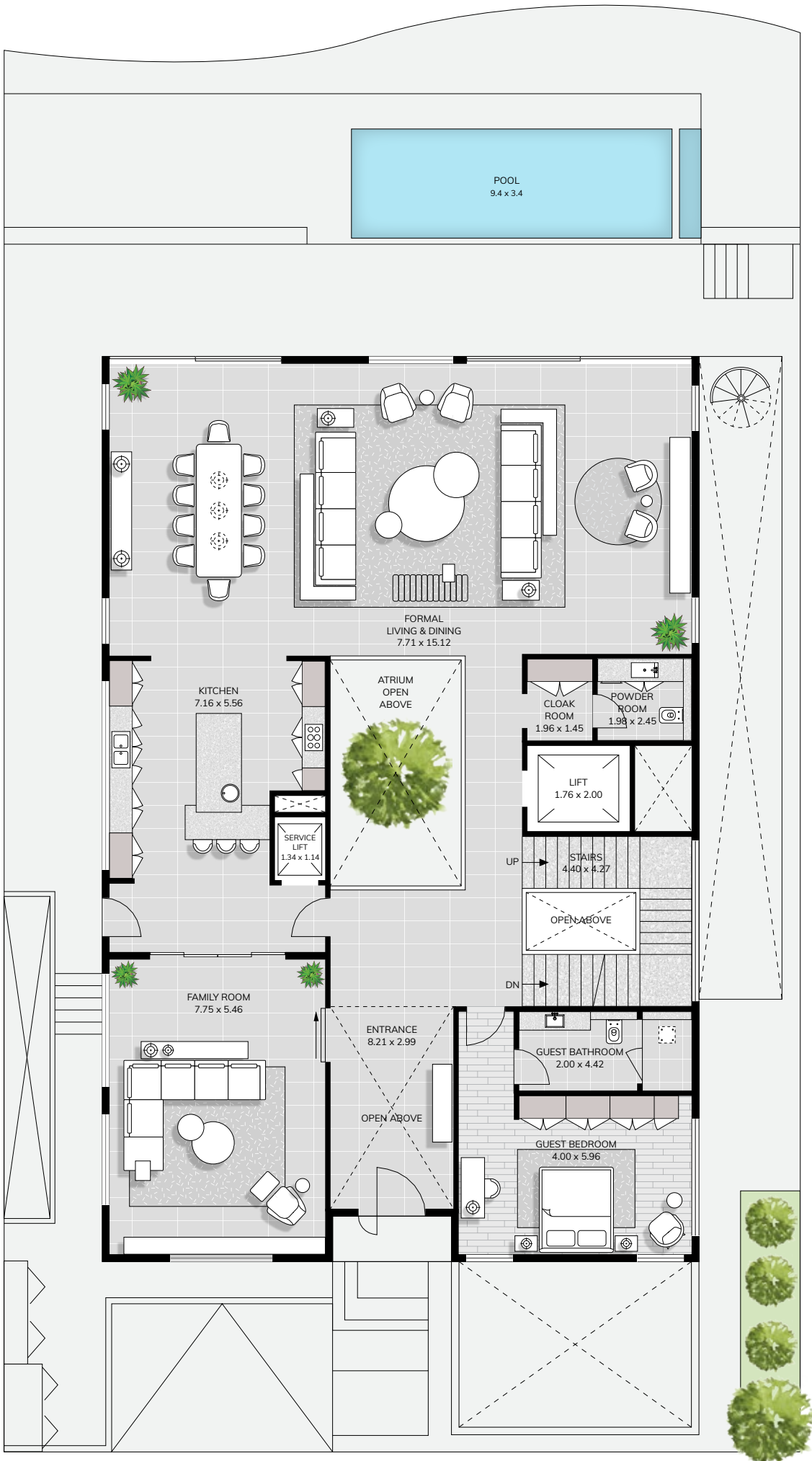
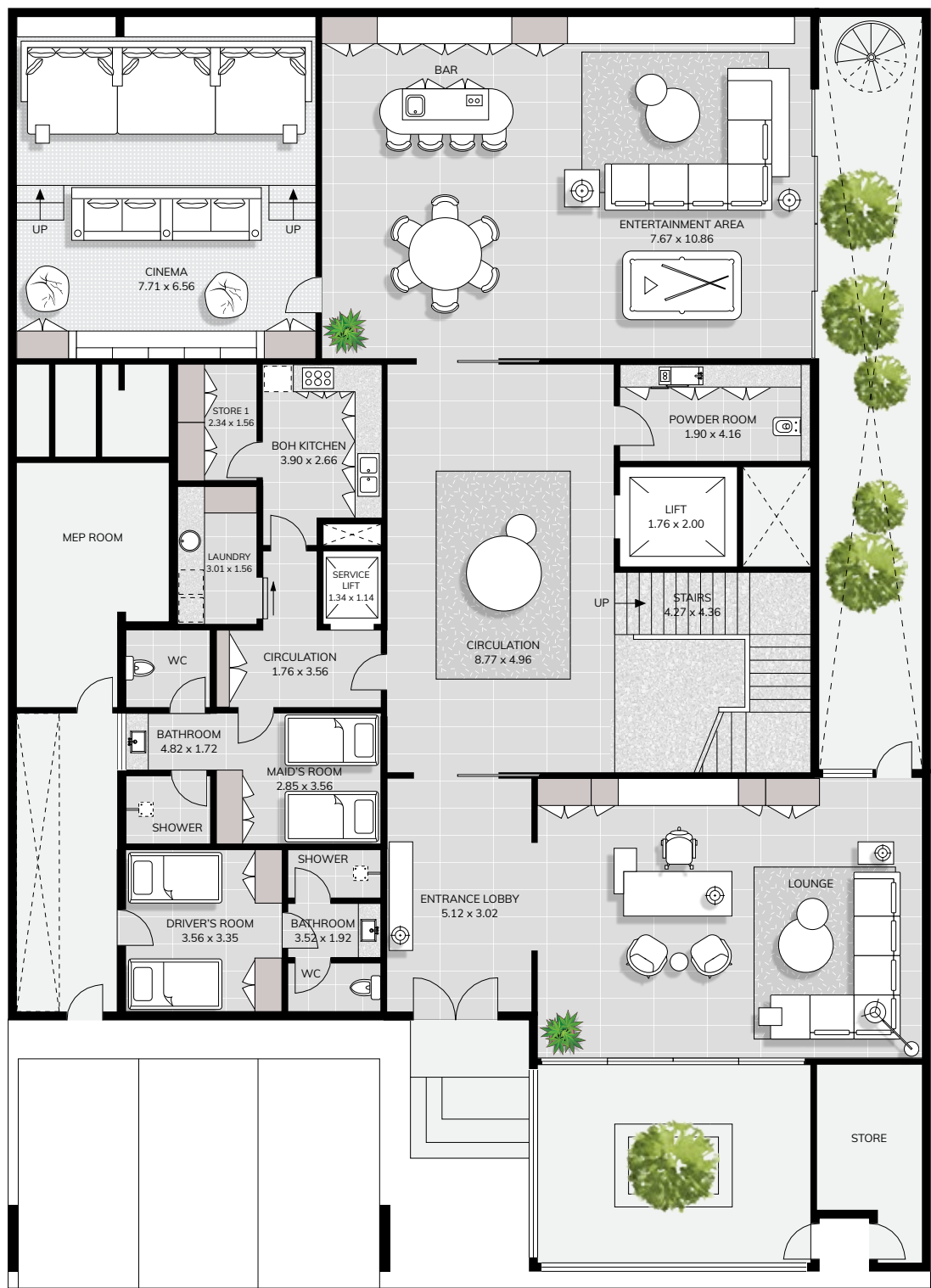




# 6 BEDROOM

Villa Type 1 THE MAGNOLIA COLLECTION  
Floors LG + G + 2

Total Area 1,487 Sq.m | 16,010 Sq.ft



## Highlights

Panoramic Views of the Fire Golf Course  
Lower Ground Arrival  
Triple Height Central Courtyard  
Pantry on Second Floor  
Entertainment Room  
Home Theater

## Key Plan

## Magnolia

Main + Service Elevators  
Private Terrace Pool  
Infinity Ground Pool  
BOH Kitchen  
Nanny, Maid, Driver Rooms



### DISCLAIMER

Any images and visualizations contained herein are provided for illustrative and marketing purposes only. All information contained herein is subject to change without notice and without liability and only the information contained in the final Sales and Purchase Agreement entered into between the Seller and Buyer will have any legal effect. E&OE.

Project Sales and Marketing by:

# THE JASMINE COLLECTION

Offering scenic view of the Golf course & the Clubhouse and vibrant contemporary design, The Jasmine Collection residences were designed with couples and young families in mind. The open-plan living arrangement provides flexible spaces to relax, entertain, work and play.

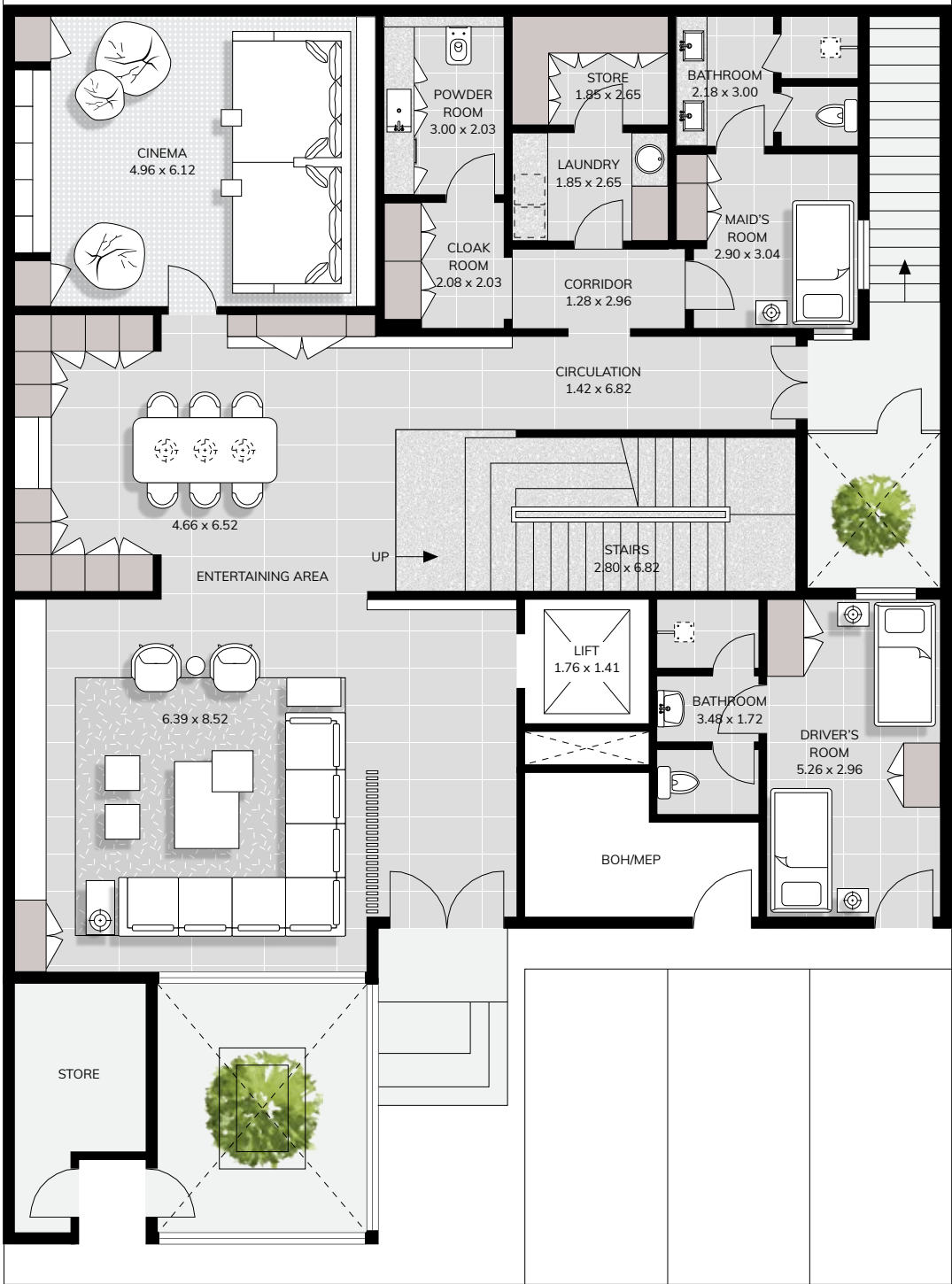




# 5 BEDROOM

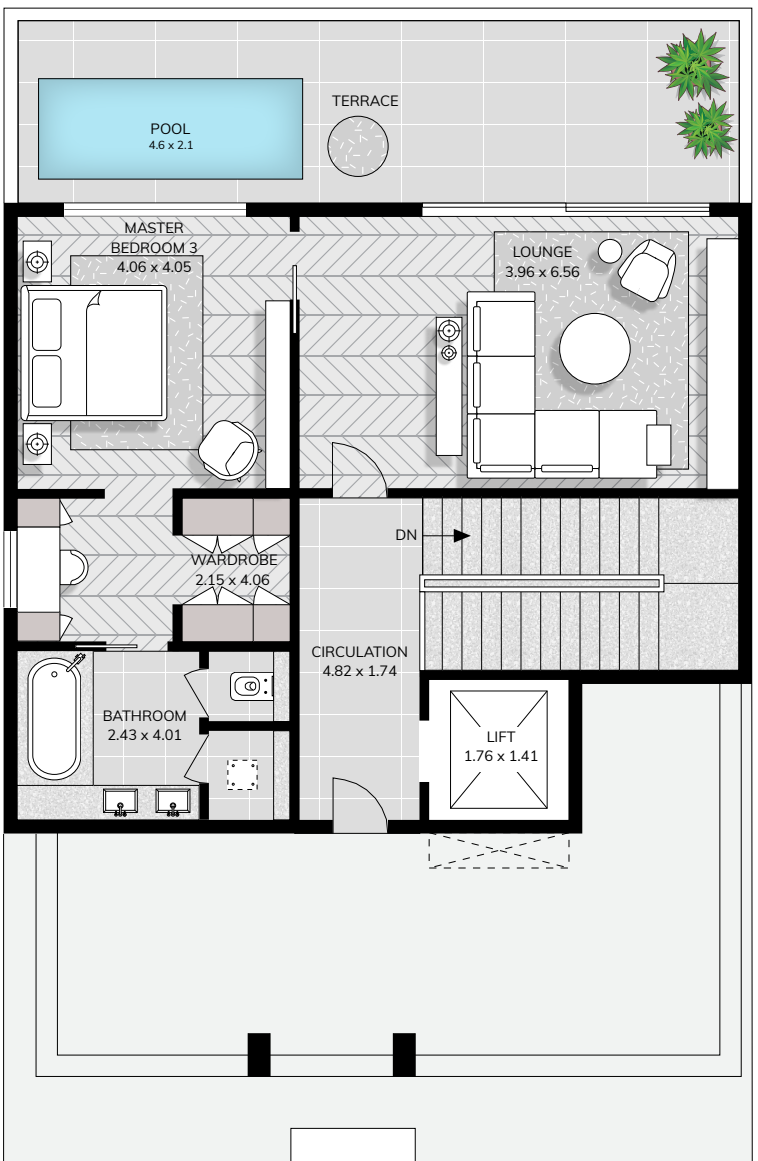
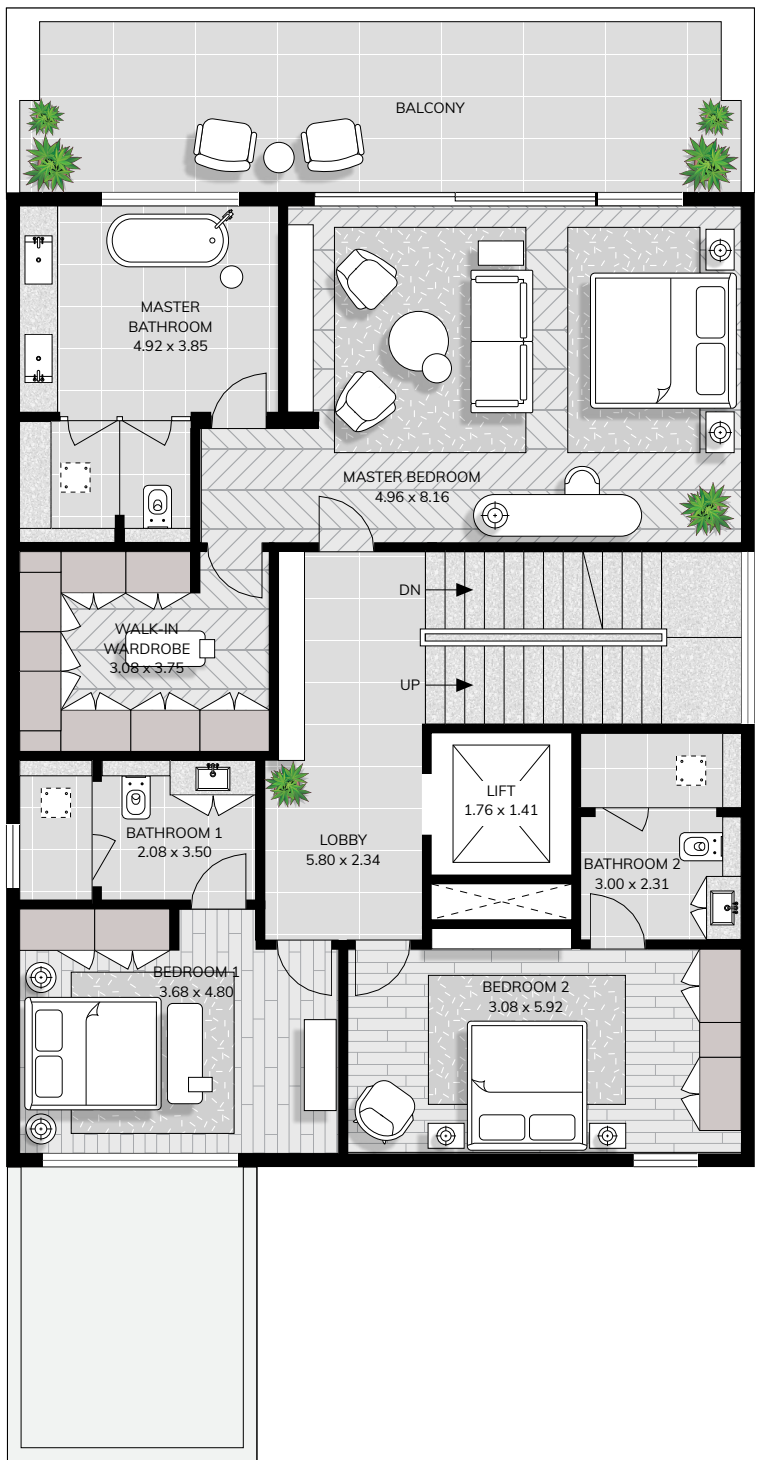
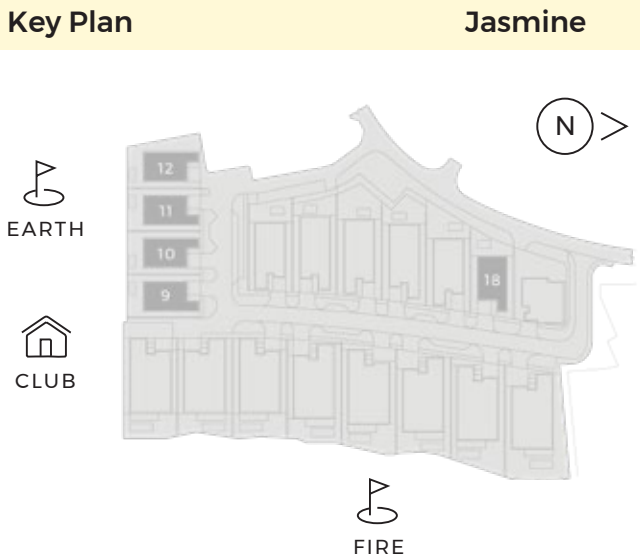
Villa Type 2 THE JASMINE COLLECTION  
Floors LG + G + 2

Total Area 823 Sq.m | 8,855 Sq.ft



- Highlights**
- Scenic View of the Earth Golf Course & Clubhouse
  - Lower Ground Arrival
  - Sunken Courtyard
  - Entertainment Room
  - Home Theater

- Main + Service Elevators
- Private Terrace Pool
- Infinity Ground Pool
- BOH Kitchen
- Maid & Driver Rooms



# THE ORCHID COLLECTION

The six en-suite bedroom villas in The Orchid Collection have panoramic views of the city skyline and the marina, offering magical urban vistas from multiple parts of the residence.

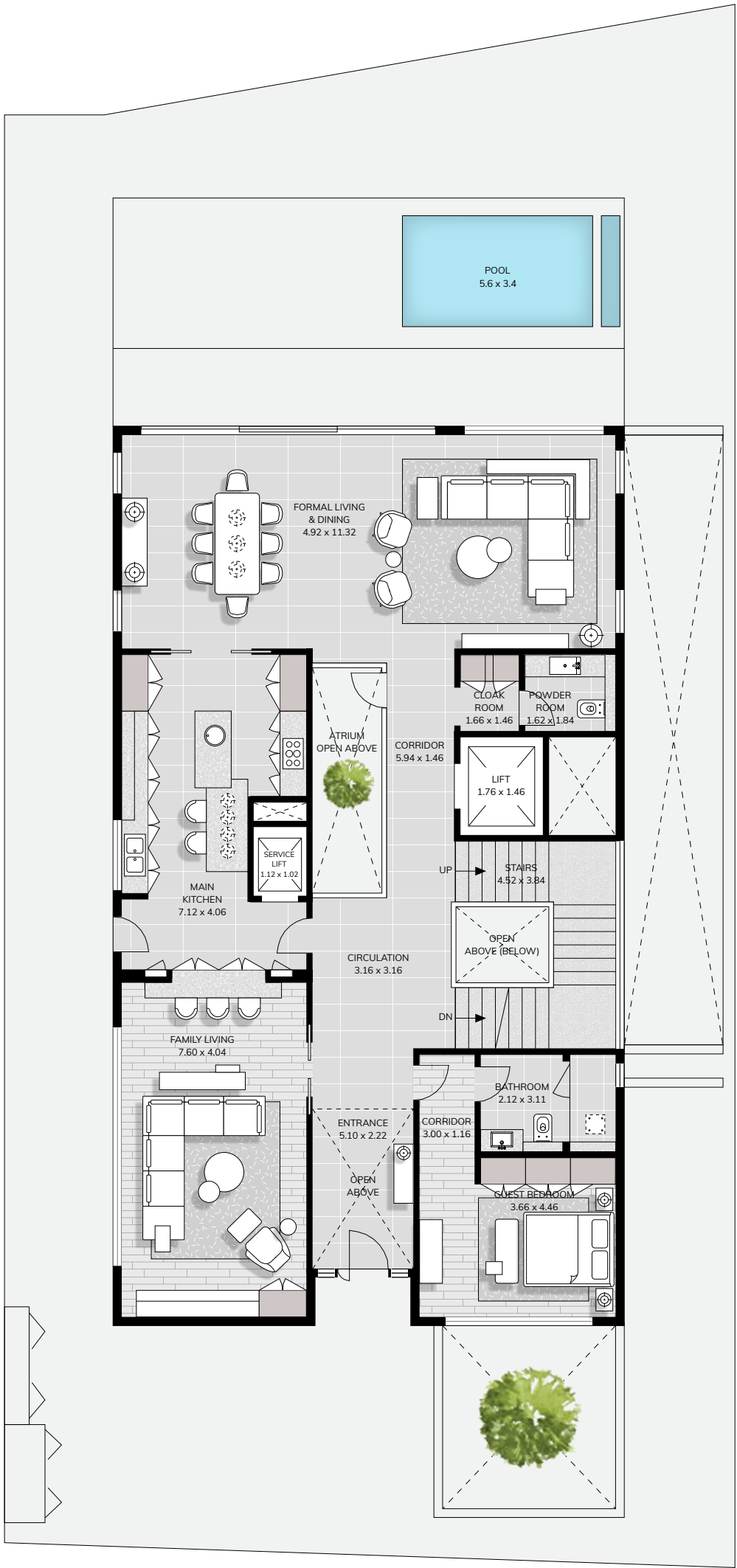




# 6 BEDROOM

Villa Type 3 THE ORCHID COLLECTION A  
Floors LG + G + 2

Total Area 1,045 Sq.m | 11,251 Sq.ft

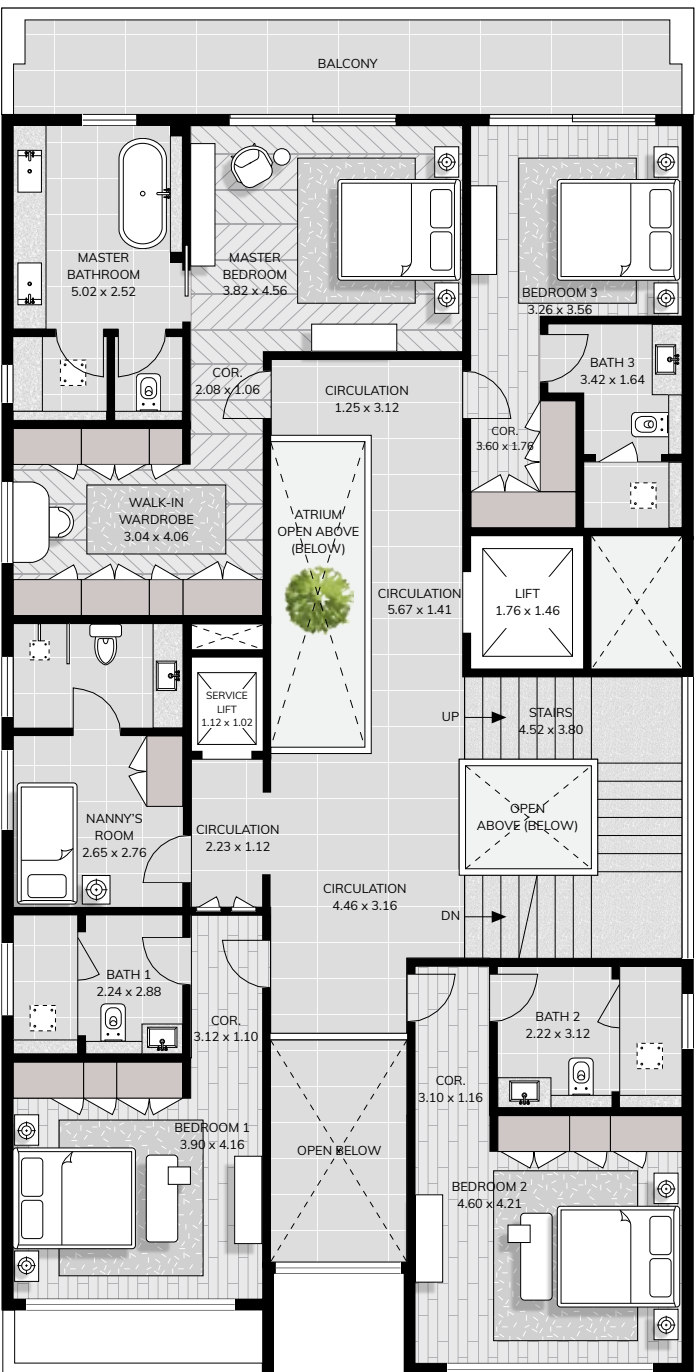
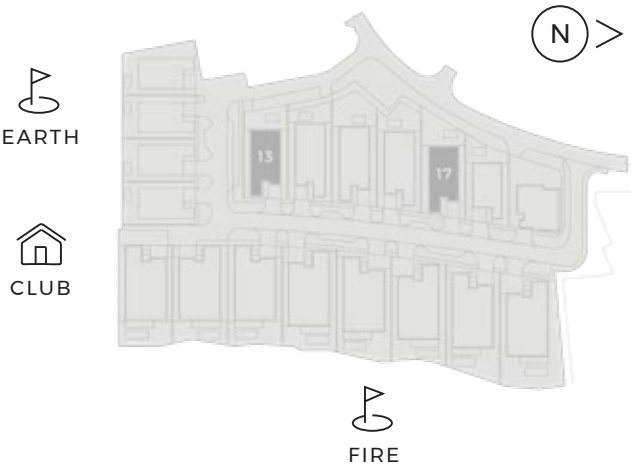


### Highlights

- Panoramic Views of the Earth Golf Course
- Lower Ground Arrival
- Triple Height Central Atrium
- Pantry on Second Floor
- Entertainment Room
- Home Theater
- Main + Service Elevators
- Private Terrace Pool
- Infinity Ground Pool
- BOH Kitchen
- Nanny, Maid, Driver Rooms

### Key Plan

### Orchid A



### DISCLAIMER

Any images and visualizations contained herein are provided for illustrative and marketing purposes only. All information contained herein is subject to change without notice and without liability and only the information contained in the final Sales and Purchase Agreement entered into between the Seller and Buyer will have any legal effect. E&OE.

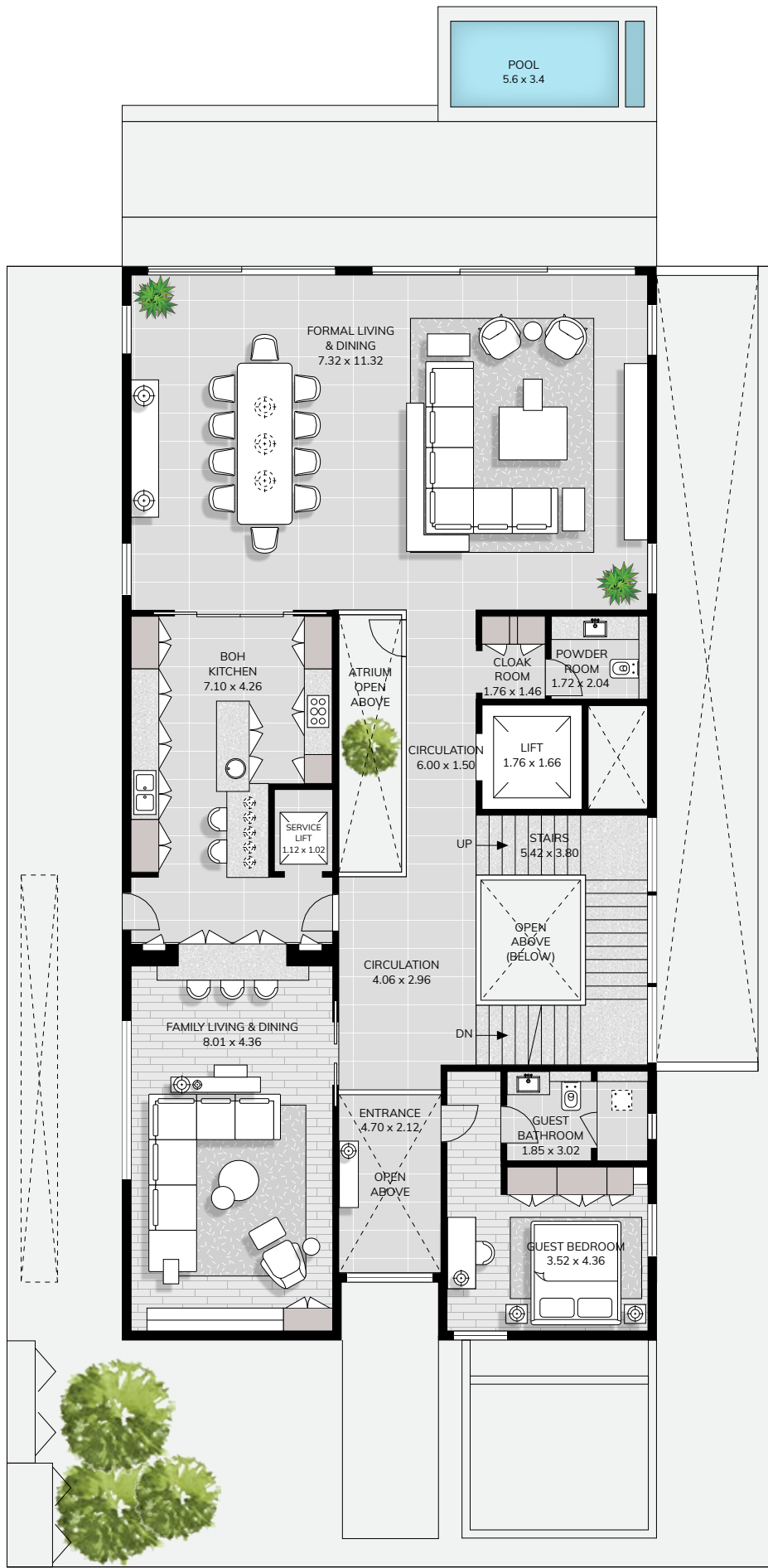
Project Sales and Marketing by:



# 6 BEDROOM

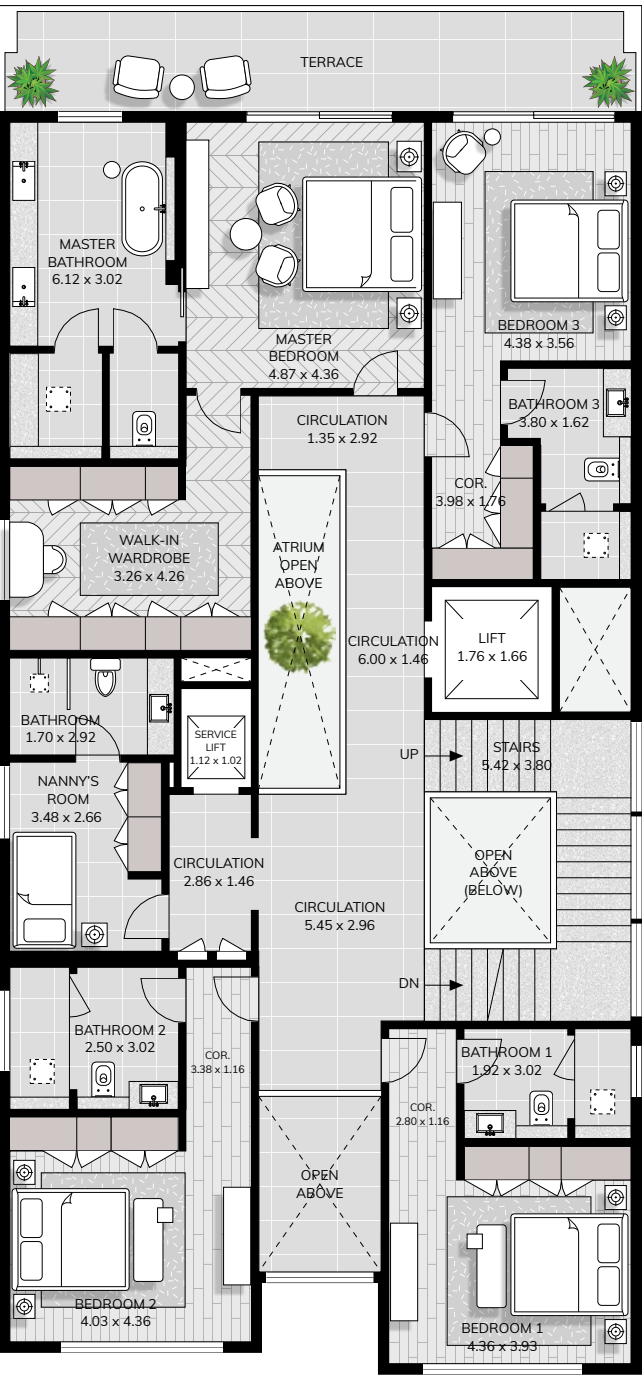
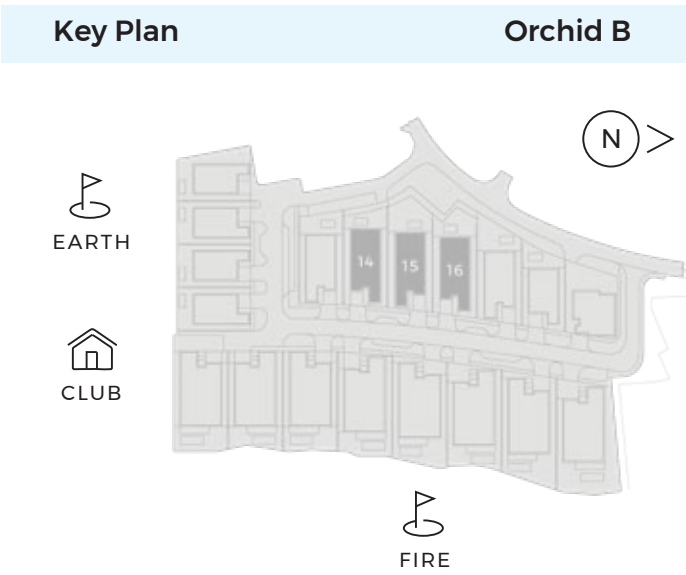
Villa Type 4 THE ORCHID COLLECTION B  
Floors LG + G + 2

Total Area 1,191 Sq.m | 12,821 Sq.ft



- Highlights
- Panoramic Views of the Earth Golf Course  
Lower Ground Arrival  
Triple Height Central Atrium  
Pantry on Second Floor  
Entertainment Room  
Home Theater

Main + Service Elevators  
Private Terrace Pool  
Infinity Ground Pool  
BOH Kitchen  
Nanny, Maid, Driver Rooms











EST

2022

# SIGNATURE MANSIONS

EXQUISITE LIVING



SIGNATURE  
DEVELOPERS

[www.signaturemansions.com](http://www.signaturemansions.com)