

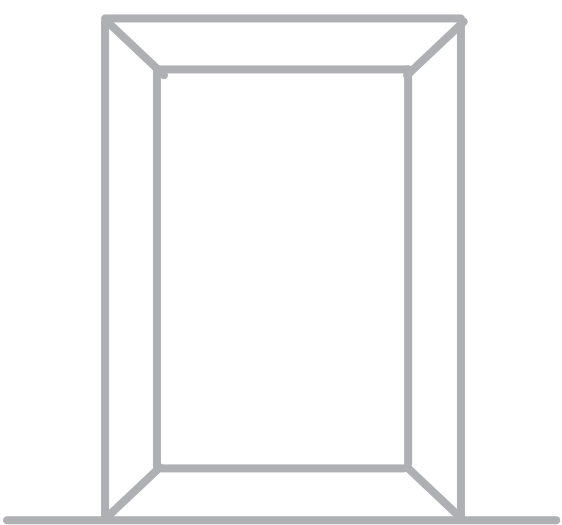
# ONE ZA'ABEEL

THE RESIDENCES

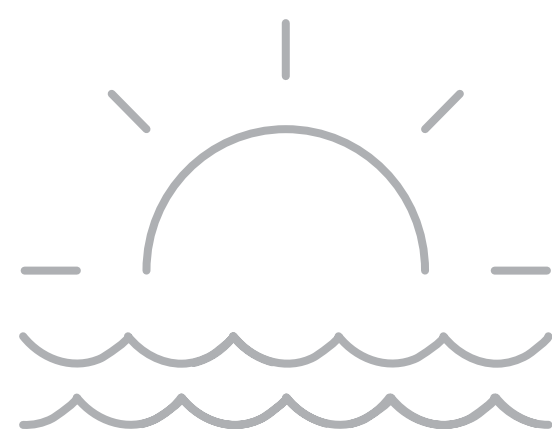
FLOOR PLATES

# ITHRA DUBAI

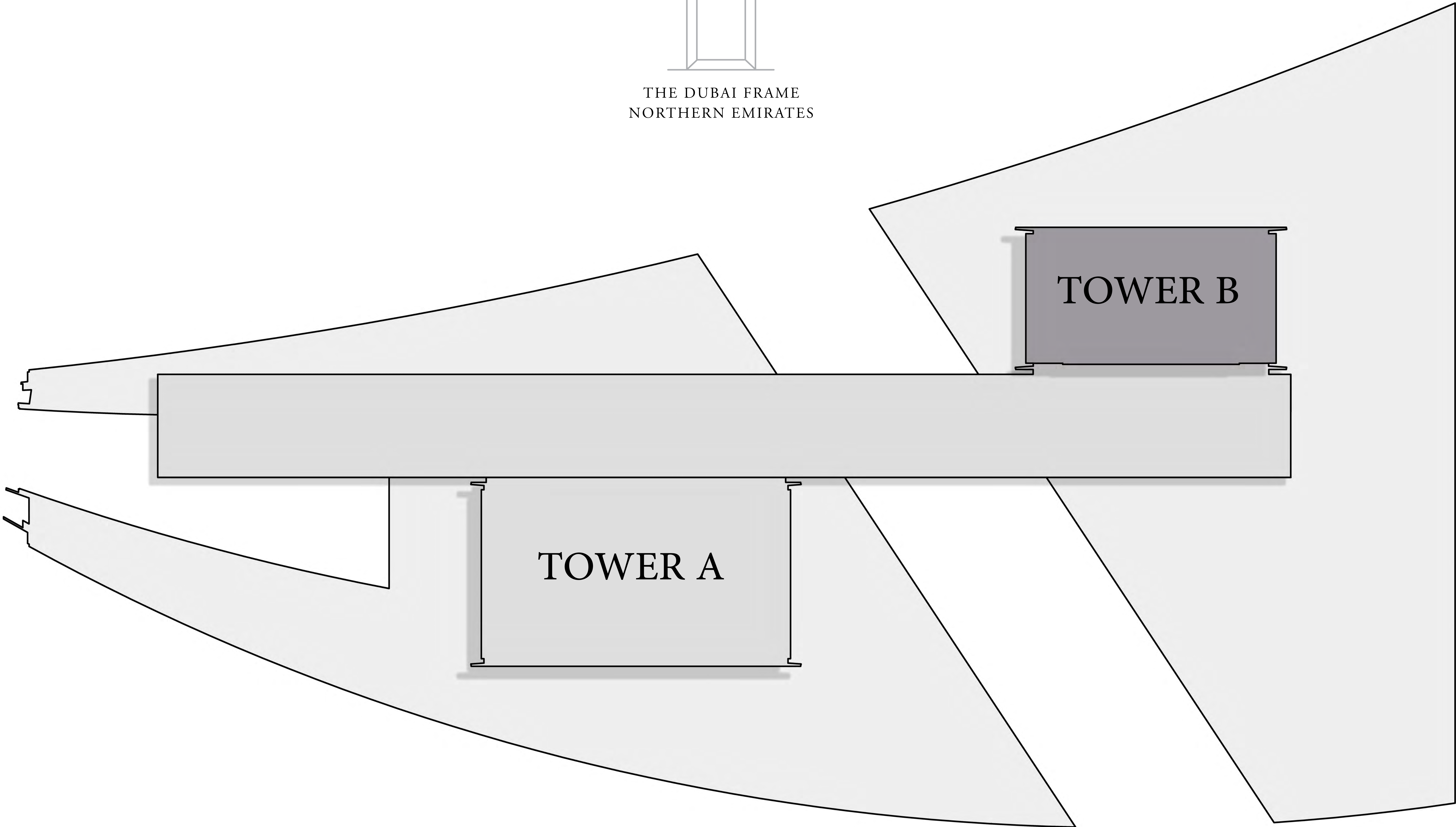
## ONE ZA'ABEEL



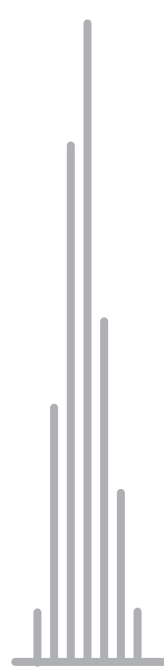
THE DUBAI FRAME  
NORTHERN EMIRATES



ARABIAN GULF



ZAABEEL

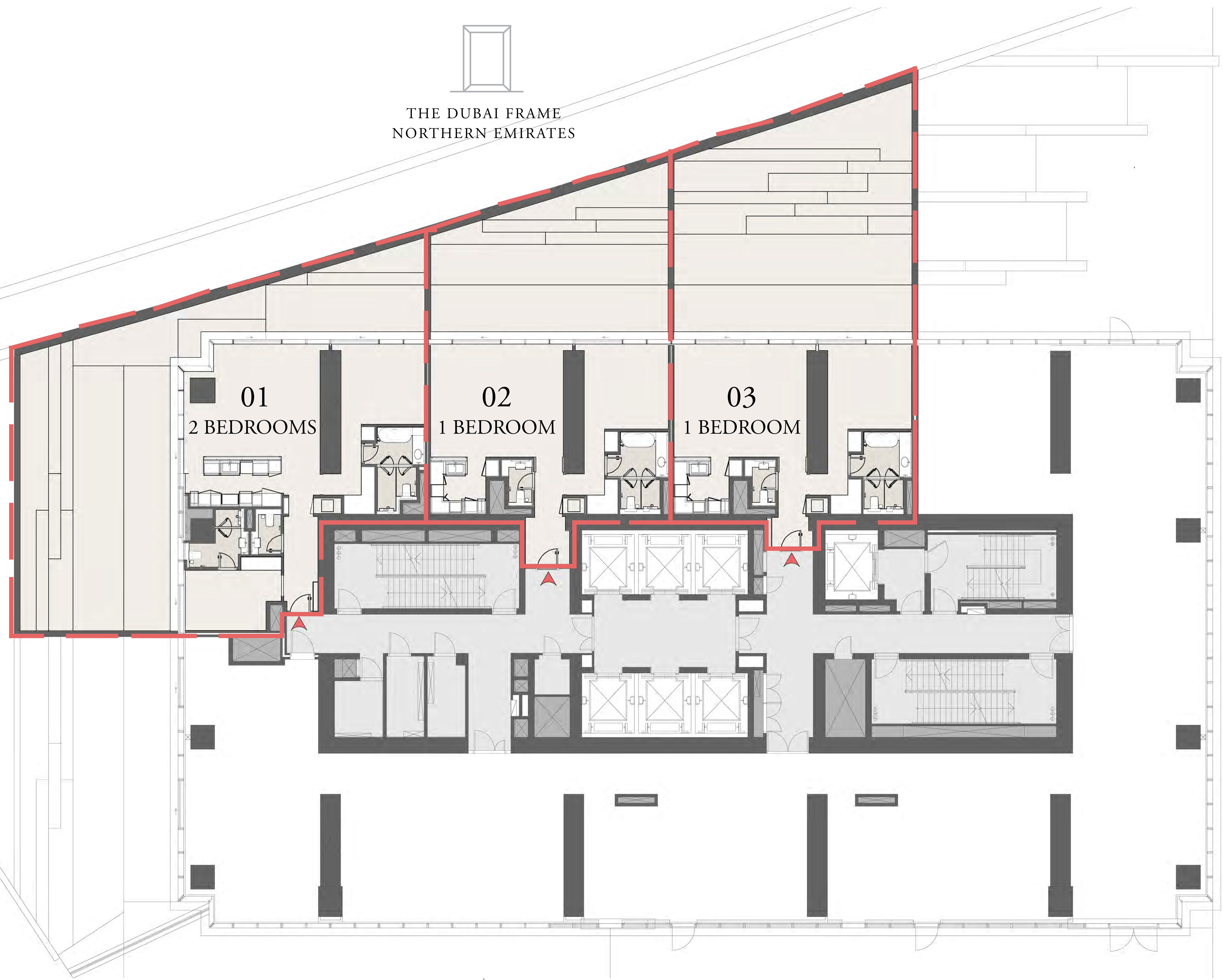


DIFC  
BURJ KHALIFA



# ITHRA DUBAI

## ONE ZA'ABEEL



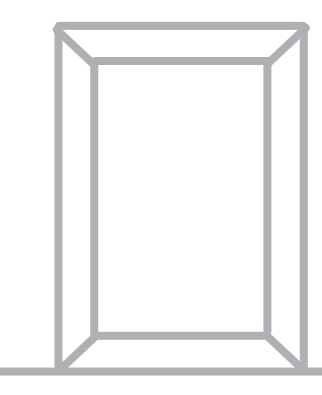
LEVEL 04 - SIMPLEX (PODIUM ROOF)

CLEAR HEIGHT (FLOOR TO CEILING)= 3.05M

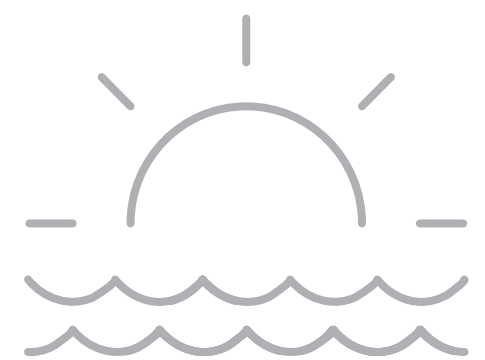
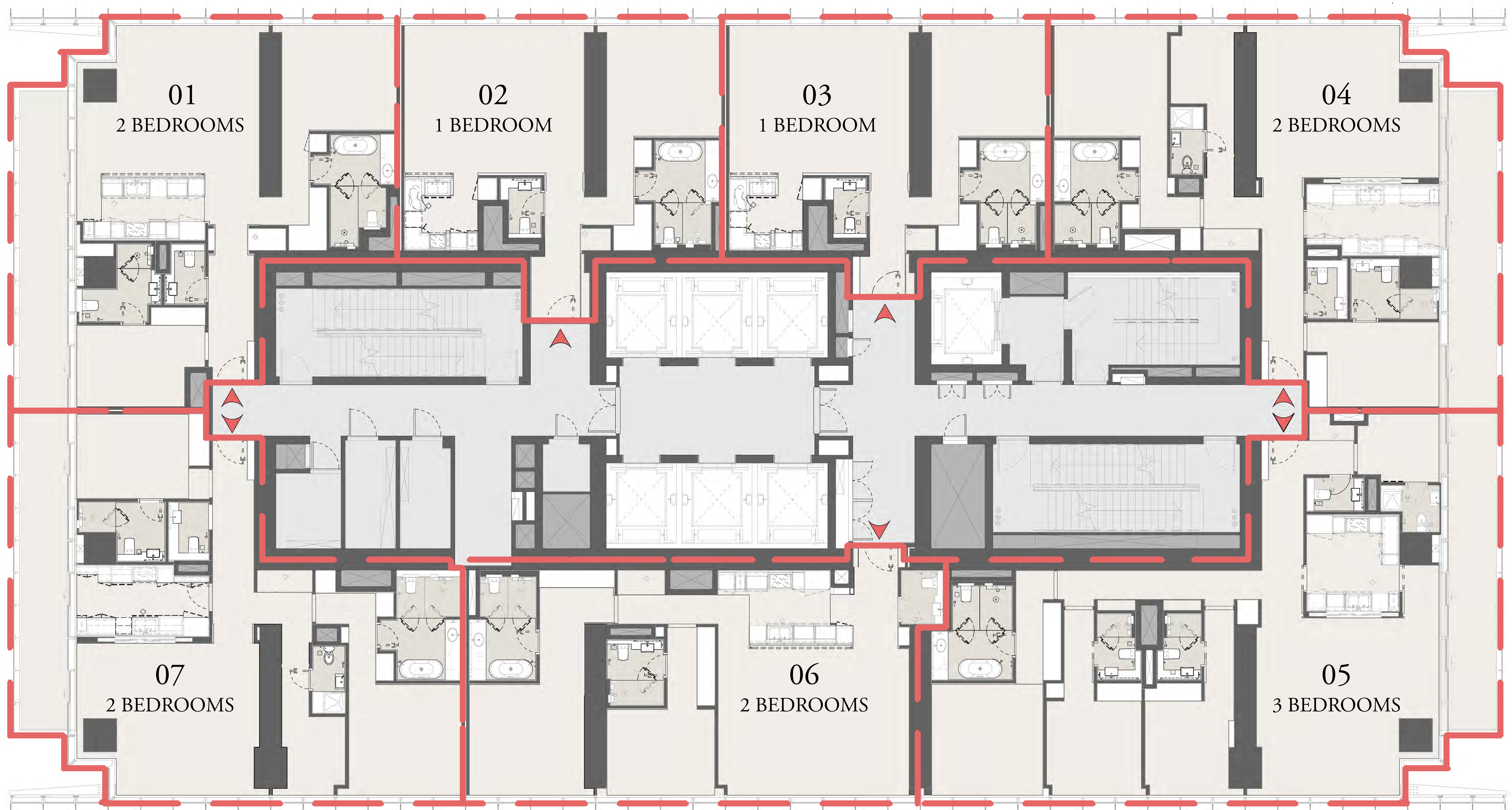




ITHRA DUBAI  
ONE ZA'ABEEL



THE DUBAI FRAME  
NORTHERN EMIRATES



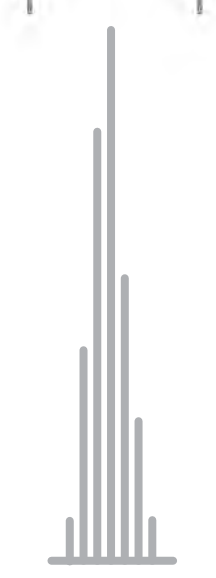
ARABIAN GULF



ZAABEEL

LEVEL 05-22 - SIMPLEX

CLEAR HEIGHT (FLOOR TO CEILING)= 3.30M

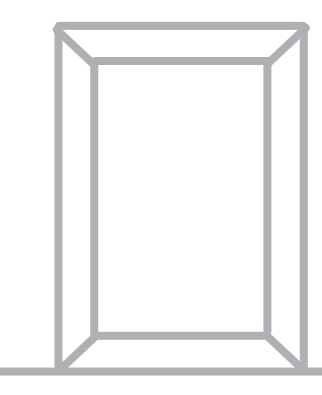


DIFC  
BURJ KHALIFA

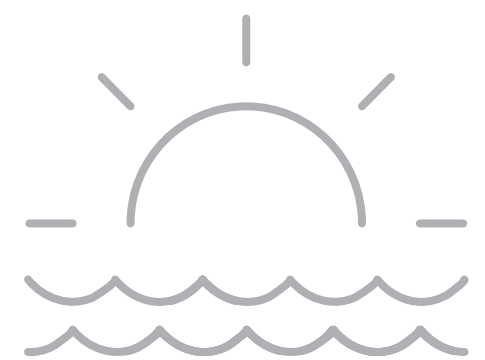
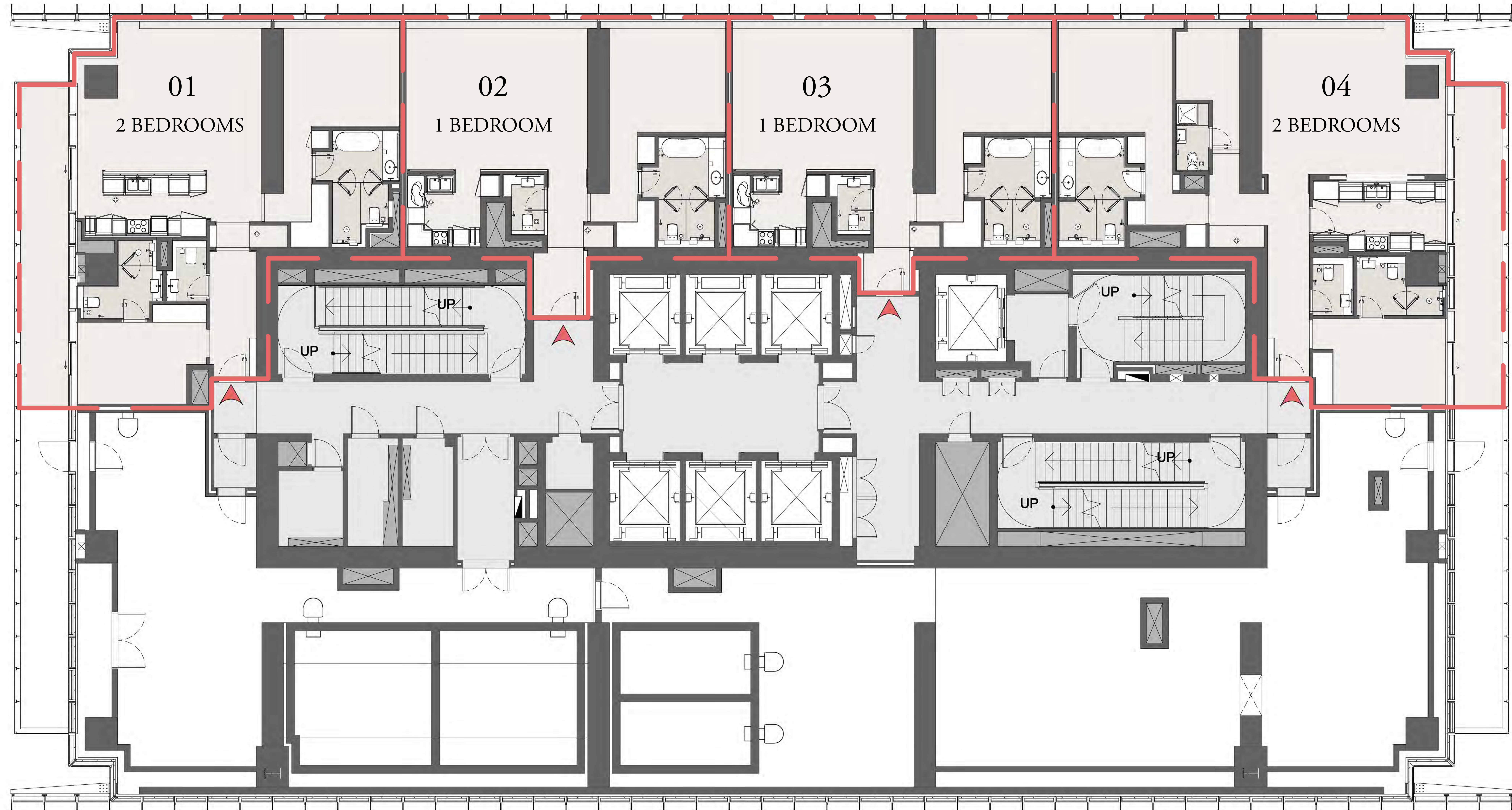


# ITHRA DUBAI

## ONE ZA'ABEEL



THE DUBAI FRAME  
NORTHERN EMIRATES



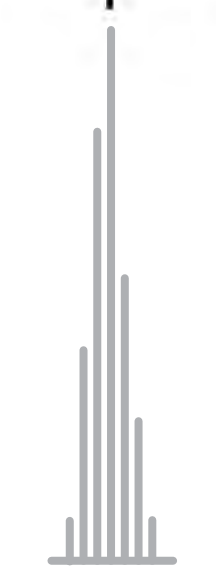
ARABIAN GULF



ZAABEEL

LEVEL 23-25 - SIMPLEX

CLEAR HEIGHT (FLOOR TO CEILING)= 3.30M

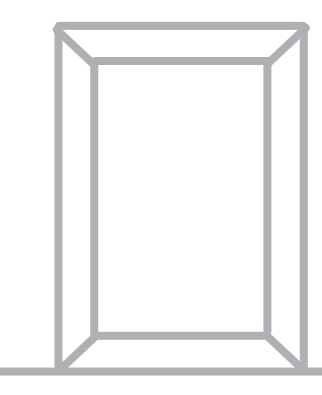


DIFC  
BURJ KHALIFA

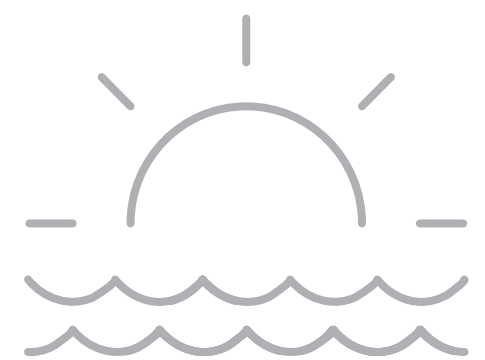
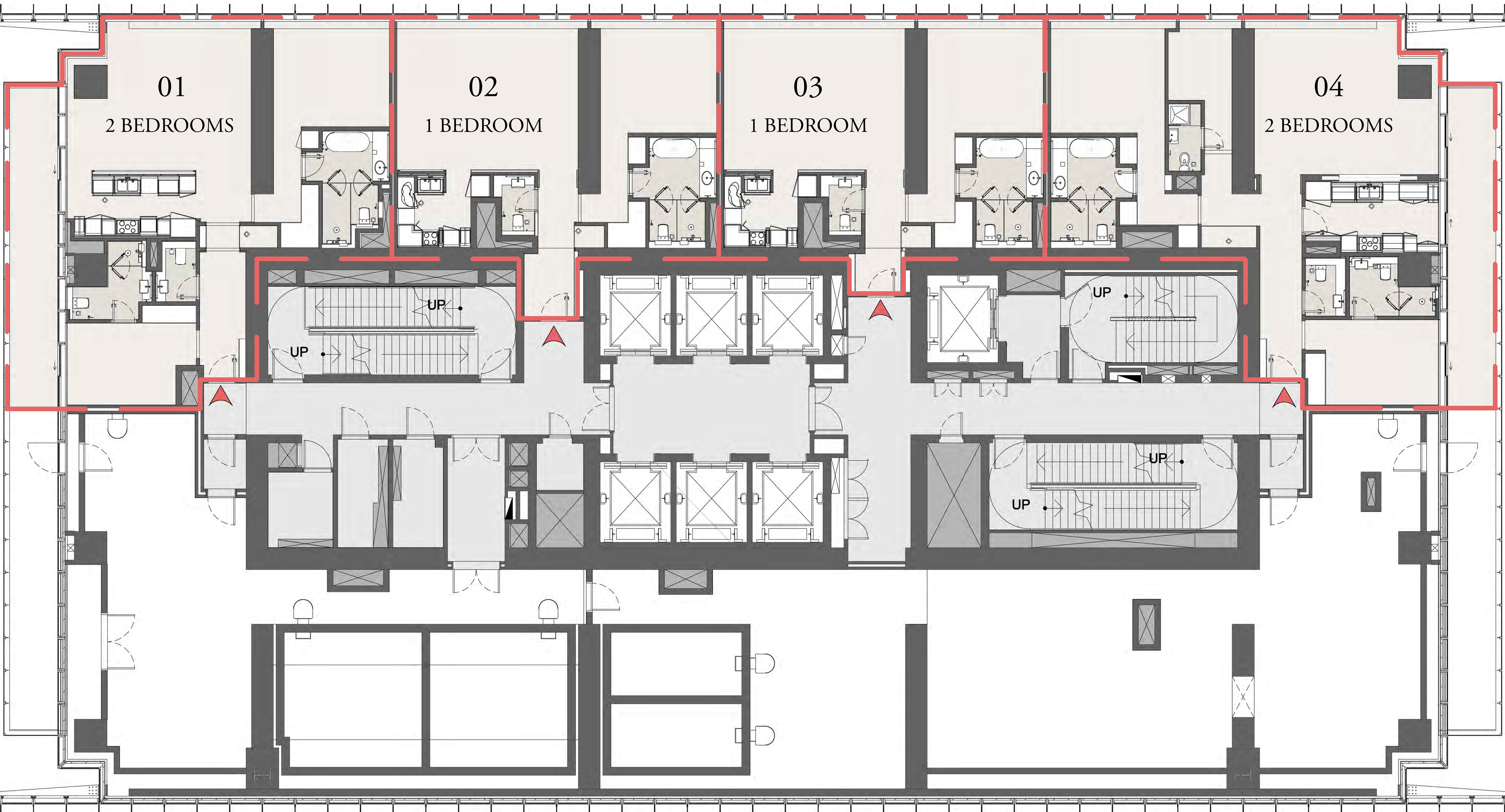


# ITHRA DUBAI

## ONE ZA'ABEEL



THE DUBAI FRAME  
NORTHERN EMIRATES



ARABIAN GULF



ZAABEEL

### LEVEL 26 - SIMPLEX

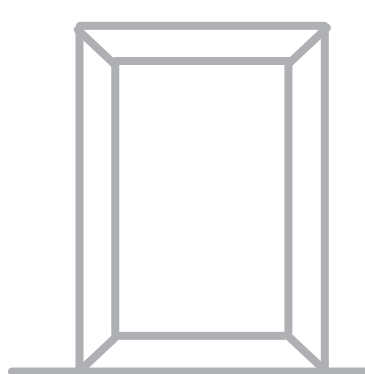
CLEAR HEIGHT (FLOOR TO CEILING)= 3.35M



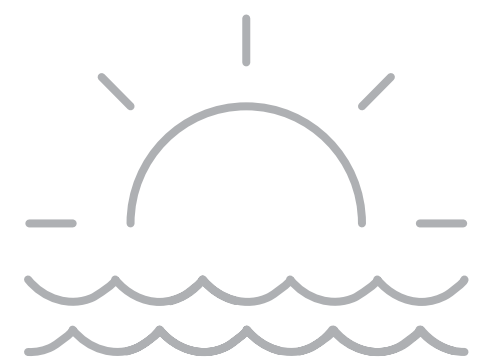
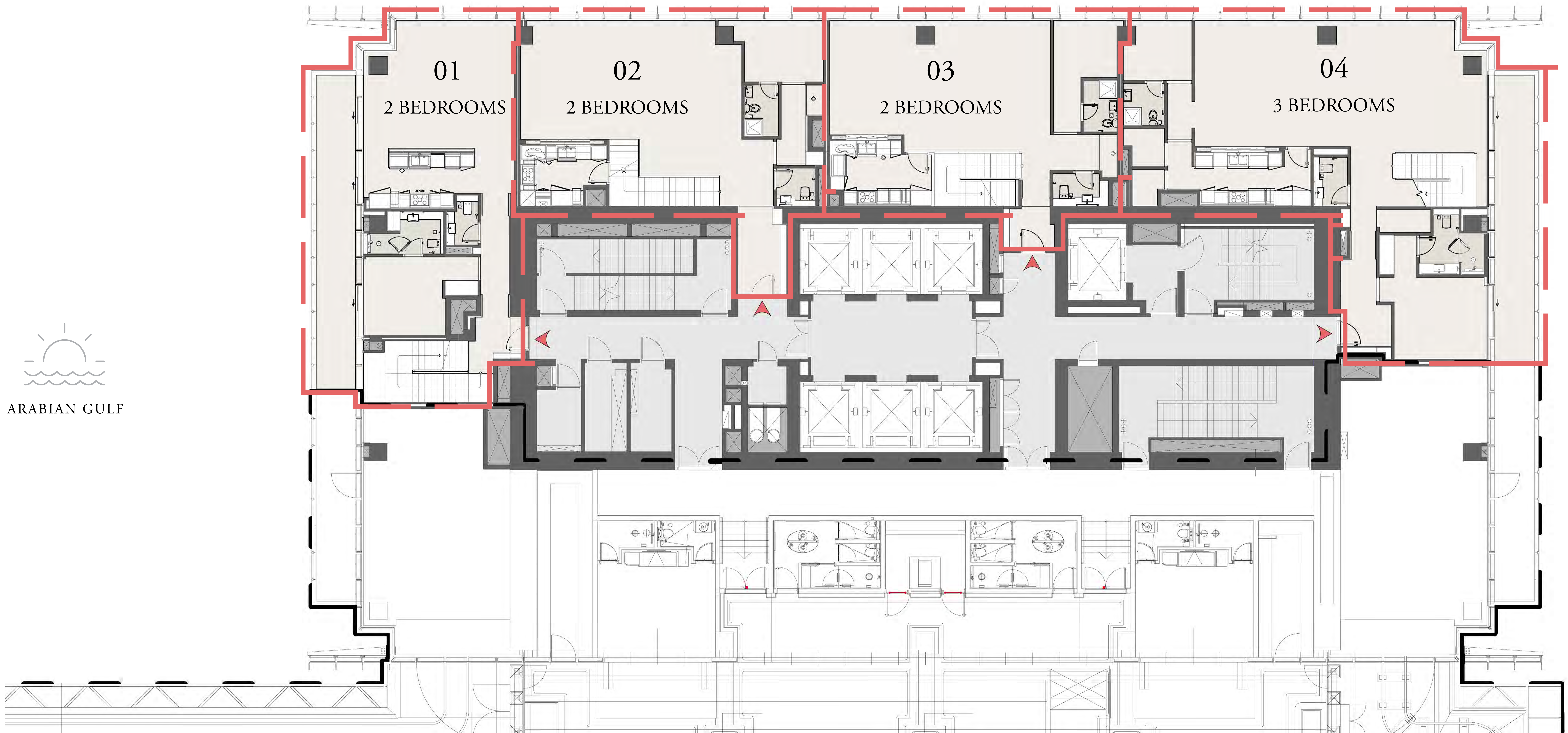
DIFC  
BURJ KHALIFA



ITHRA DUBAI  
ONE ZA'ABEEL



THE DUBAI FRAME  
NORTHERN EMIRATES



ARABIAN GULF



ZAABEEL

LEVEL 30 - DUPLEX FLOOR (LOWER LEVEL)

CLEAR HEIGHT (FLOOR TO CEILING)= 3.30M

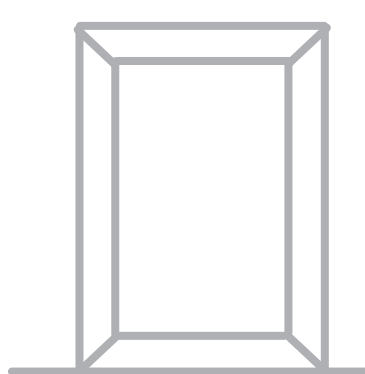


DIFC  
BURJ KHALIFA

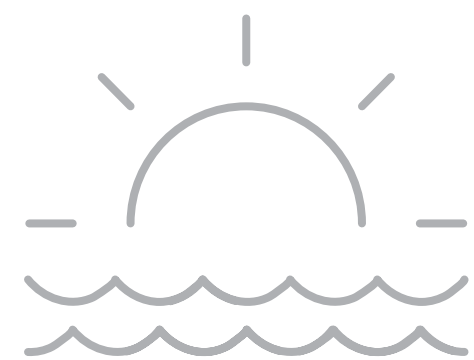
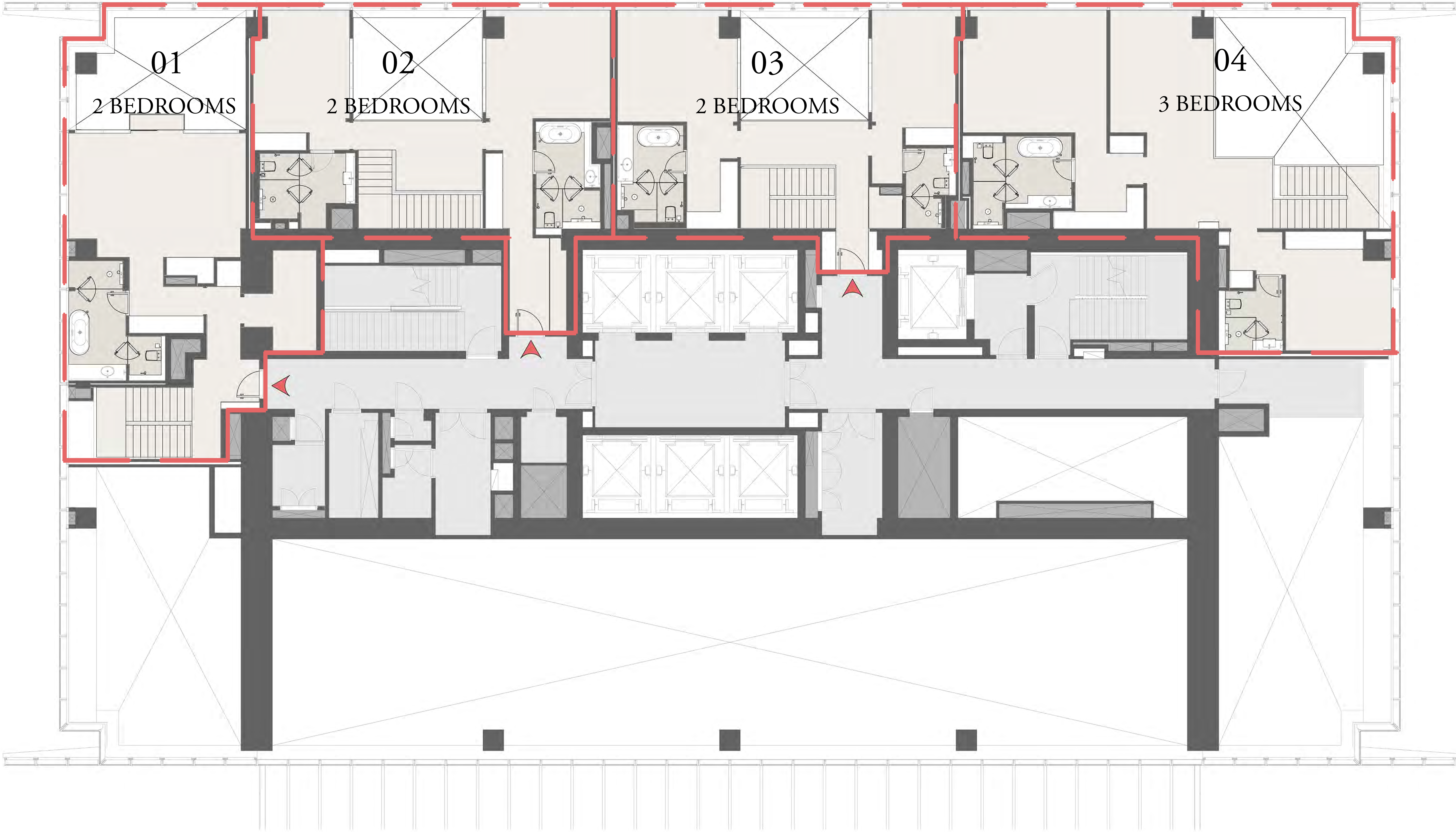


# ITHRA DUBAI

## ONE ZA'ABEEL



THE DUBAI FRAME  
NORTHERN EMIRATES



ARABIAN GULF



ZAABEEL

### LEVEL 31 - DUPLEX FLOOR (UPPER LEVEL)

CLEAR HEIGHT (FLOOR TO CEILING)= 3.30M

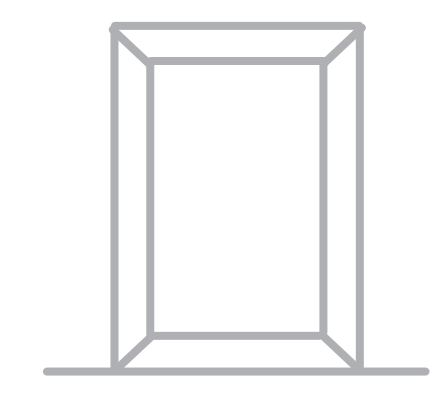


DIFC  
BURJ KHALIFA

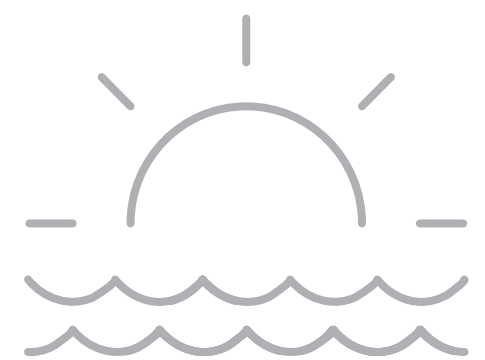


# ITHRA DUBAI

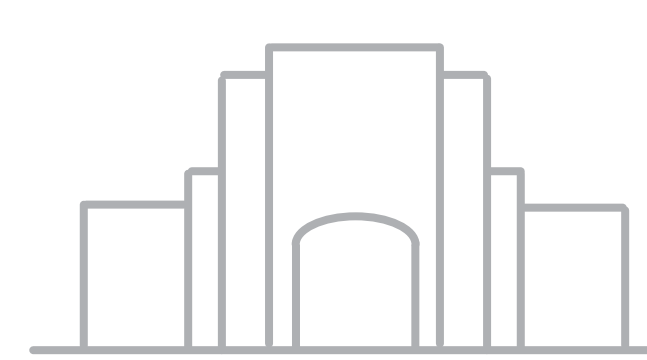
## ONE ZA'ABEEL



THE DUBAI FRAME  
NORTHERN EMIRATES



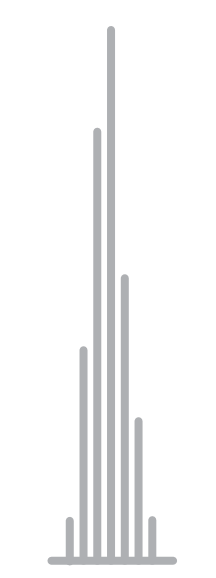
ARABIAN GULF



ZAABEEL

LEVEL 32/34/36/38/40/42/44/46 DUPLEX  
FLOORS (LOWER LEVELS)

CLEAR HEIGHT (FLOOR TO CEILING)= 3.30M

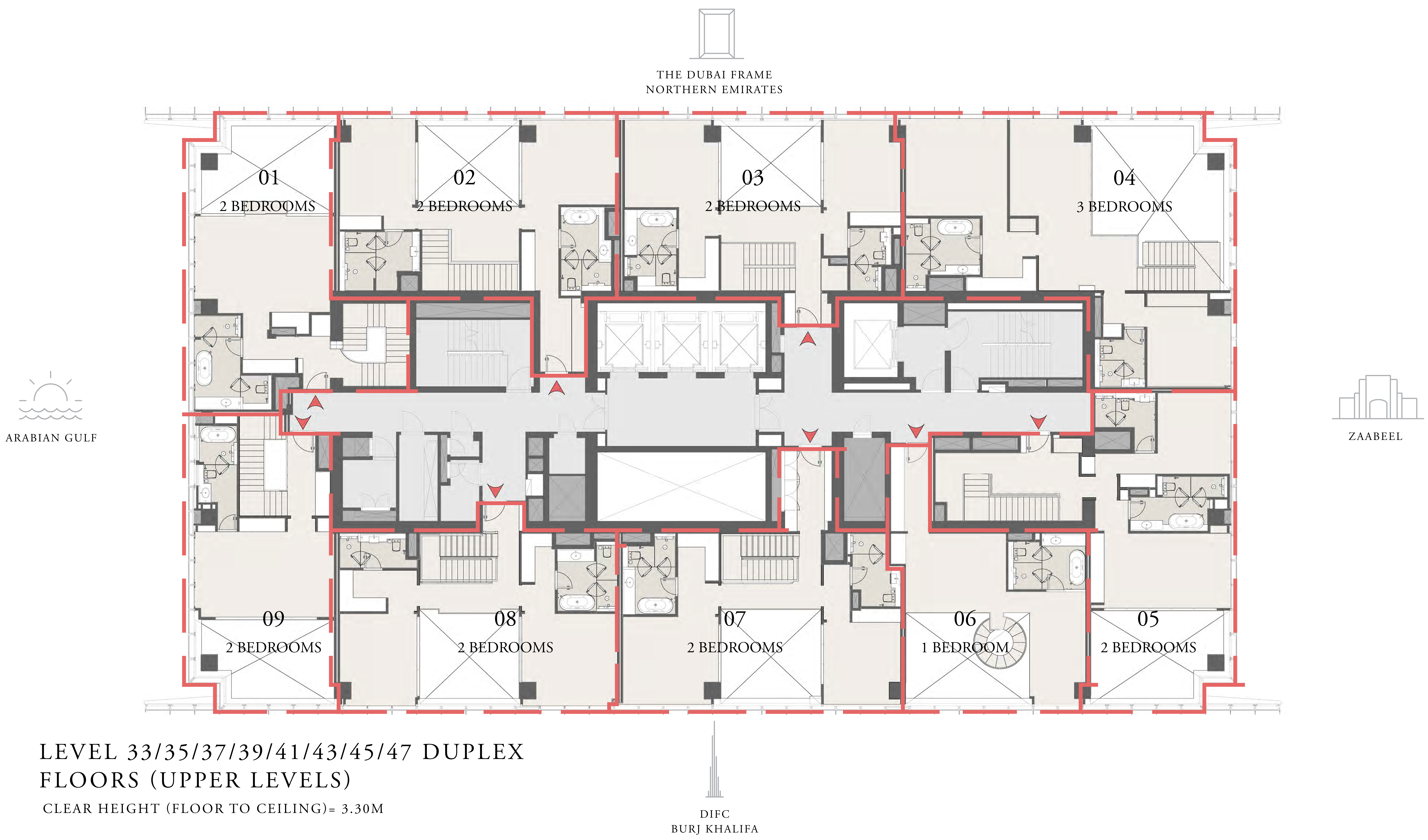


DIFC  
BURJ KHALIFA



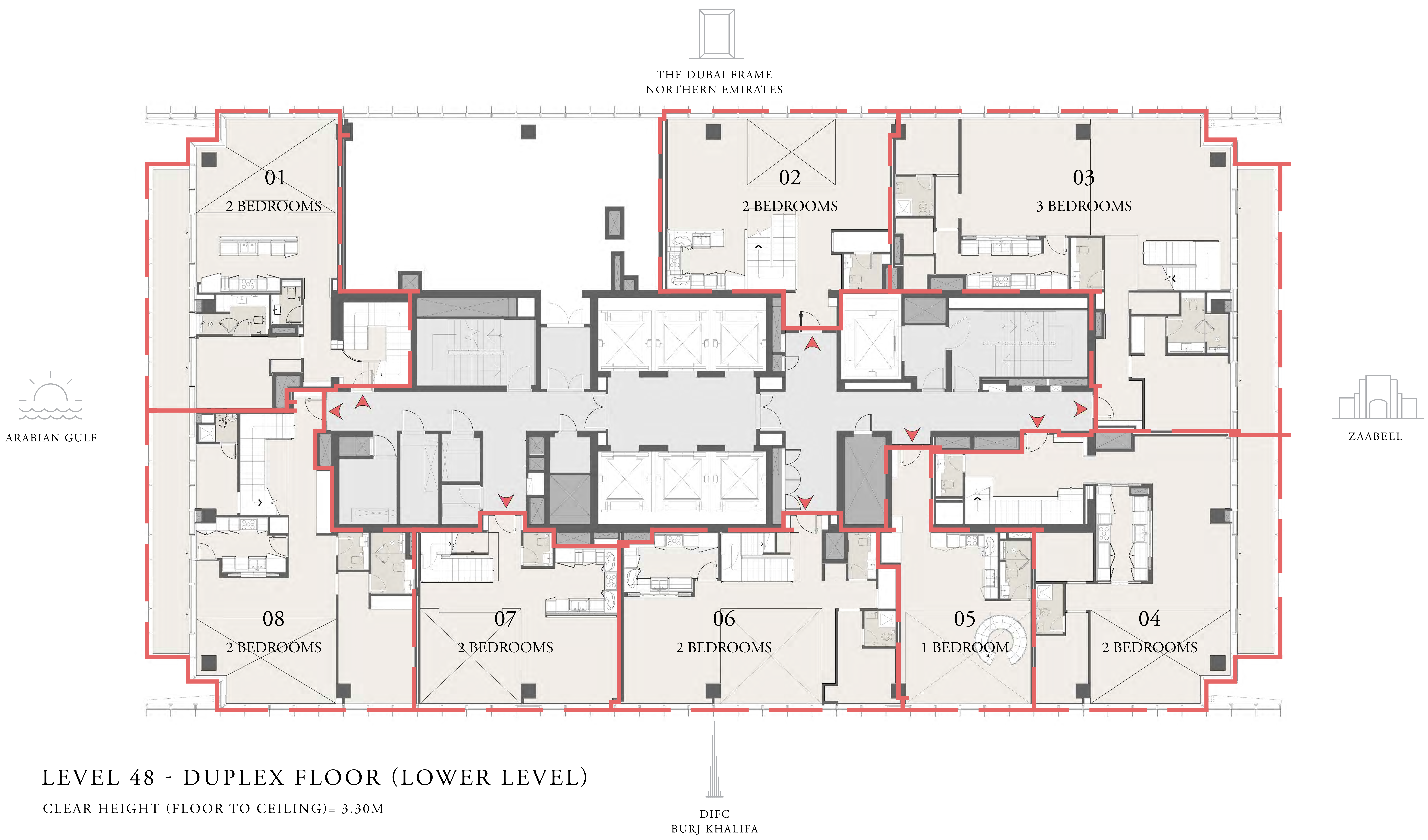
# ITHRA DUBAI

## ONE ZA'ABEEL



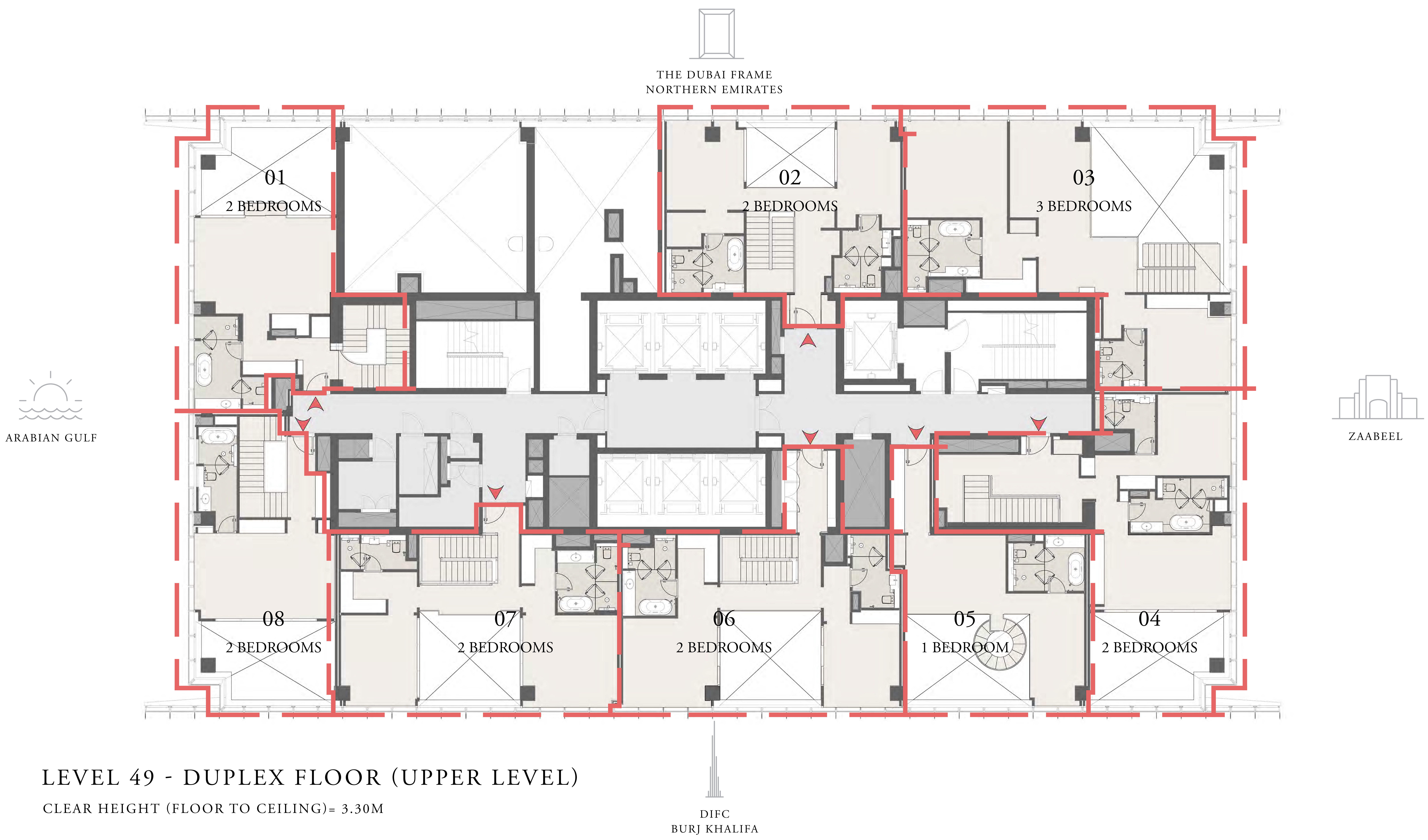


ITHRA DUBAI  
ONE ZA'ABEEL





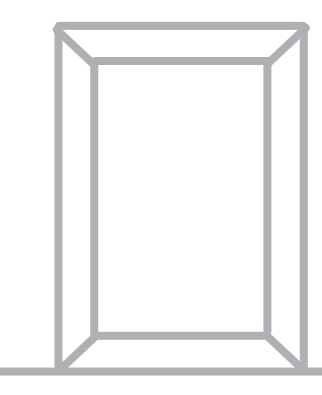
ITHRA DUBAI  
ONE ZA'ABEEL



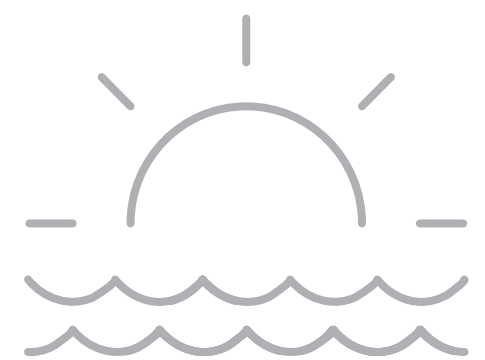
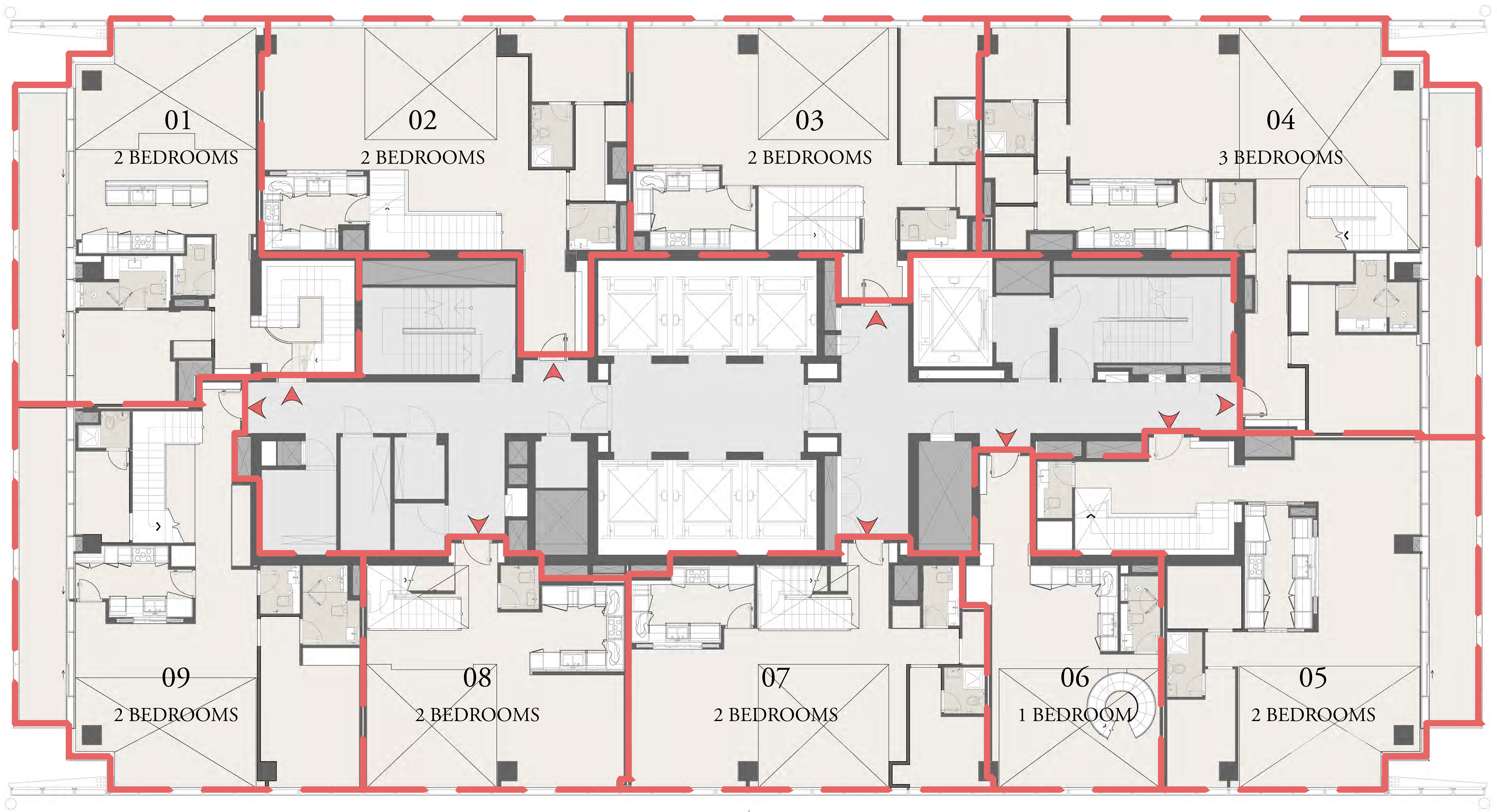


# ITHRA DUBAI

## ONE ZA'ABEEL



THE DUBAI FRAME  
NORTHERN EMIRATES



ARABIAN GULF



ZAABEEL



DIFC  
BURJ KHALIFA

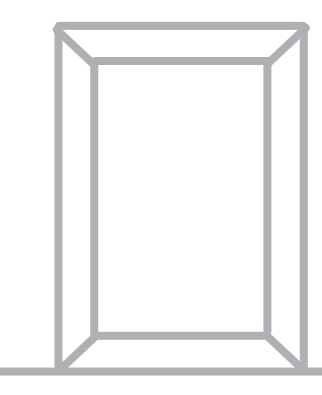
LEVEL 50/52 - DUPLEX FLOORS (LOWER LEVELS)

CLEAR HEIGHT (FLOOR TO CEILING)= 3.30M

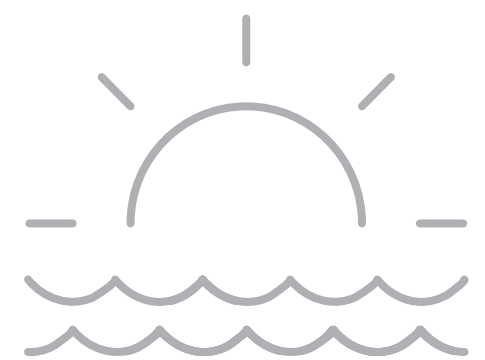
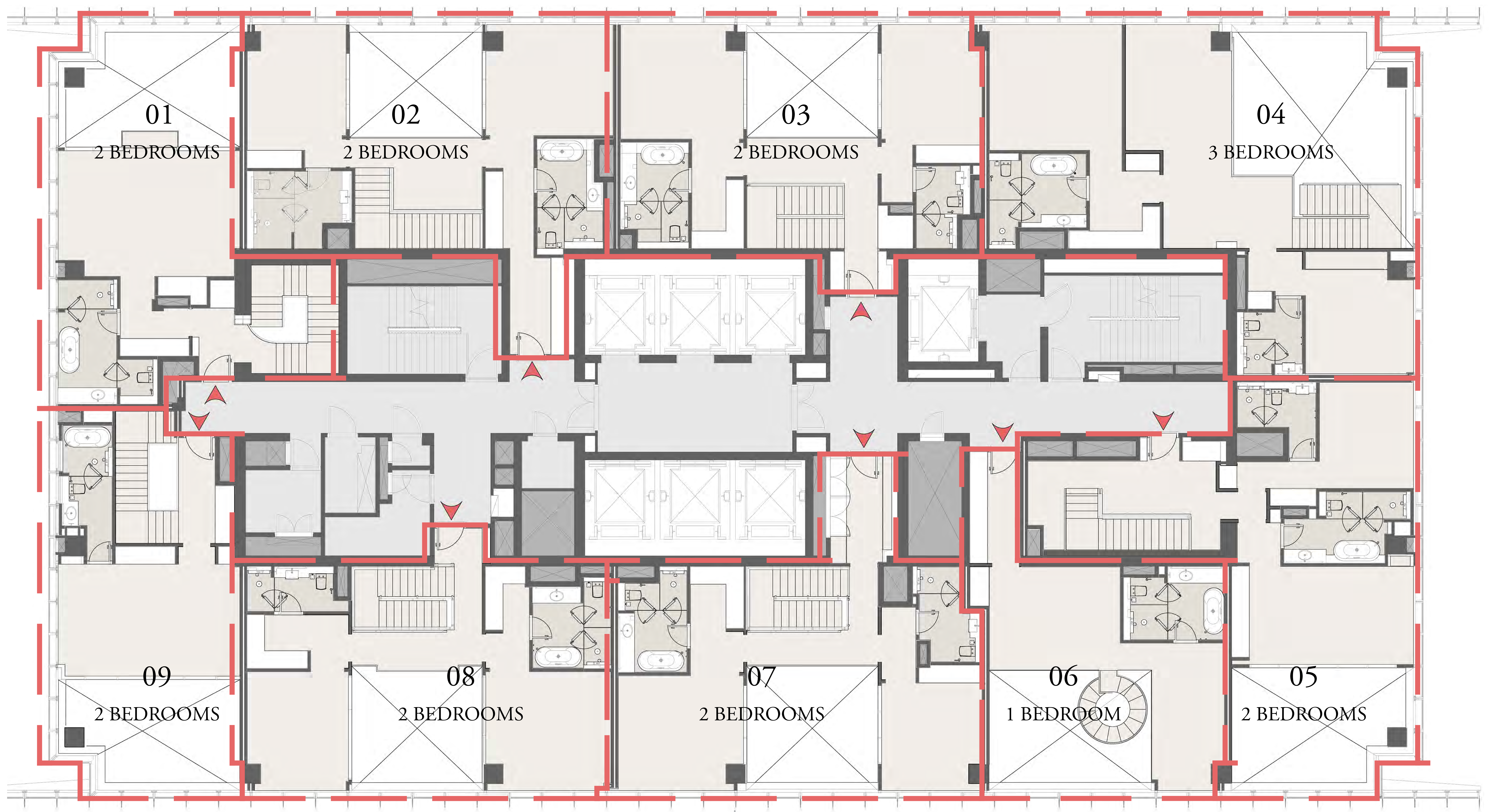


# ITHRA DUBAI

## ONE ZA'ABEEL



THE DUBAI FRAME  
NORTHERN EMIRATES



ARABIAN GULF



ZAABEEL

LEVEL 51/53 - DUPLEX FLOORS (UPPER LEVELS)

CLEAR HEIGHT (FLOOR TO CEILING)= 3.30M

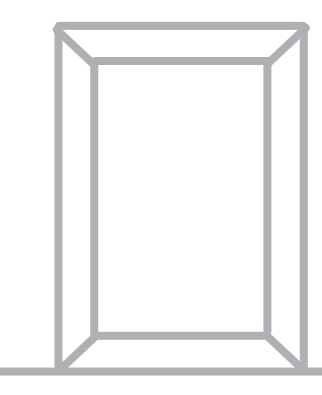


DIFC  
BURJ KHALIFA

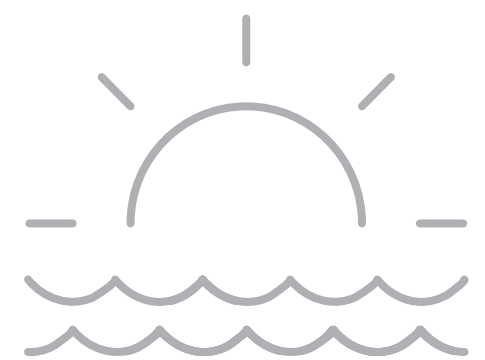
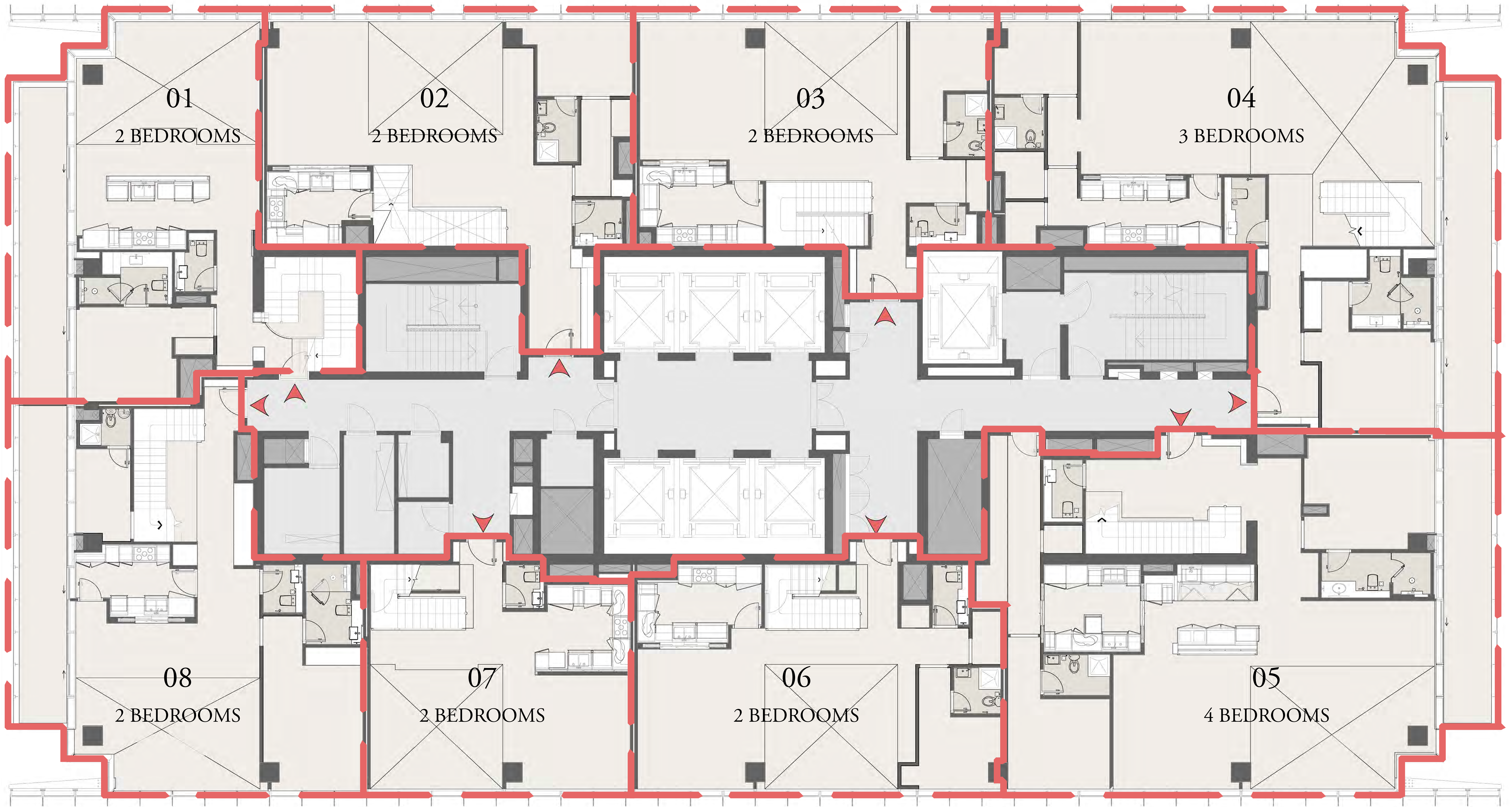


# ITHRA DUBAI

## ONE ZA'ABEEL



THE DUBAI FRAME  
NORTHERN EMIRATES



ARABIAN GULF



ZAABEEL



DIFC  
BURJ KHALIFA

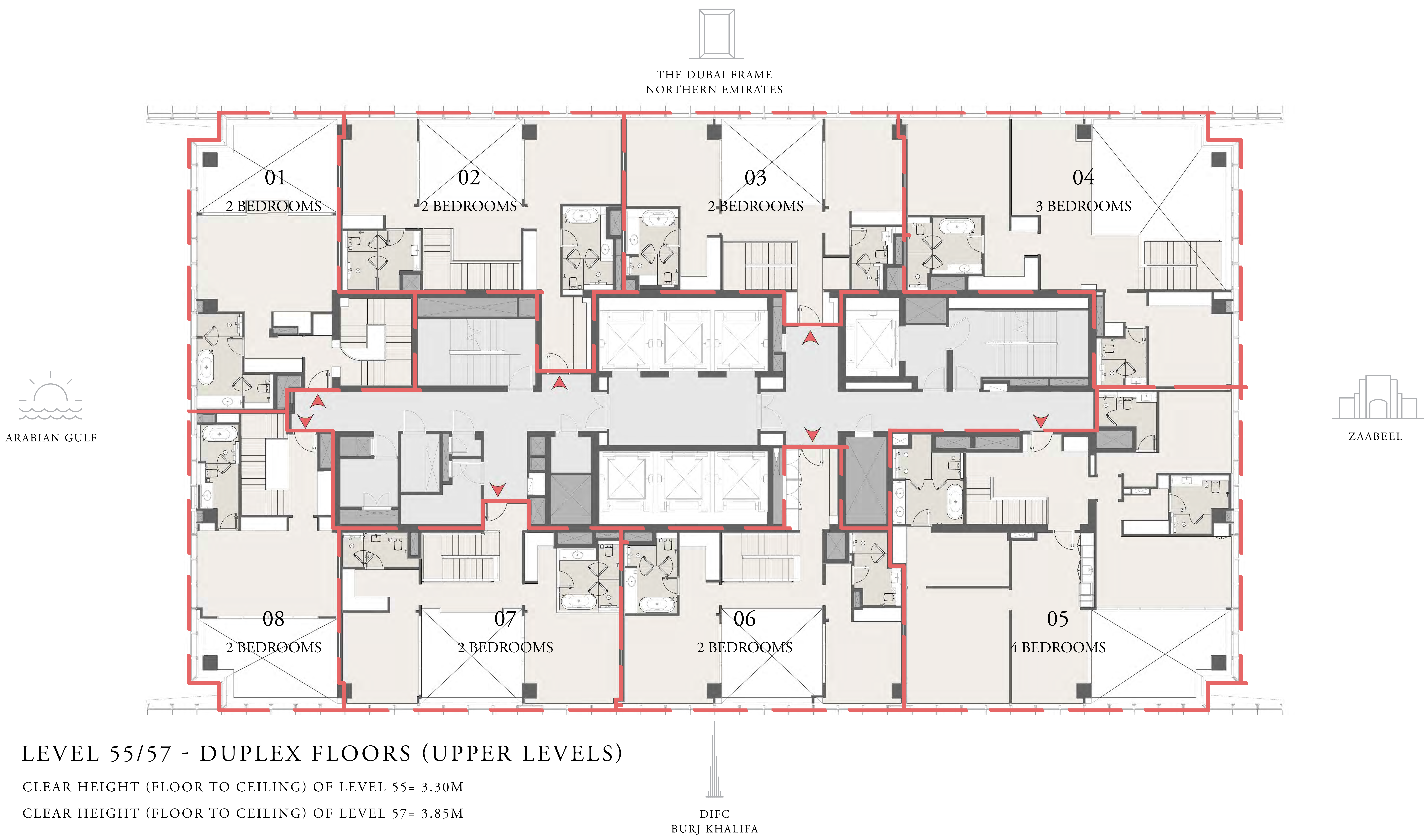
LEVEL 54/56 - DUPLEX FLOORS (LOWER LEVELS)

CLEAR HEIGHT (FLOOR TO CEILING)= 3.30M



# ITHRA DUBAI

## ONE ZA'ABEEL



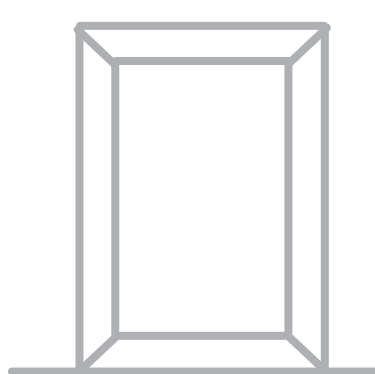
### LEVEL 55/57 - DUPLEX FLOORS (UPPER LEVELS)

CLEAR HEIGHT (FLOOR TO CEILING) OF LEVEL 55= 3.30M

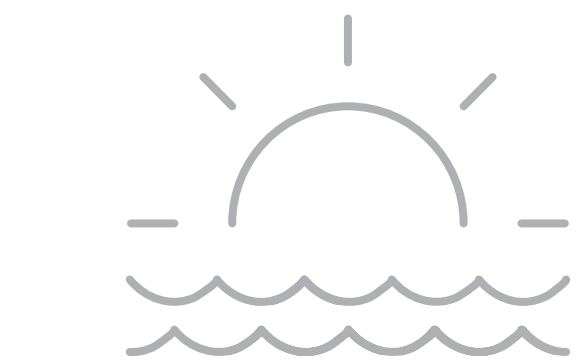
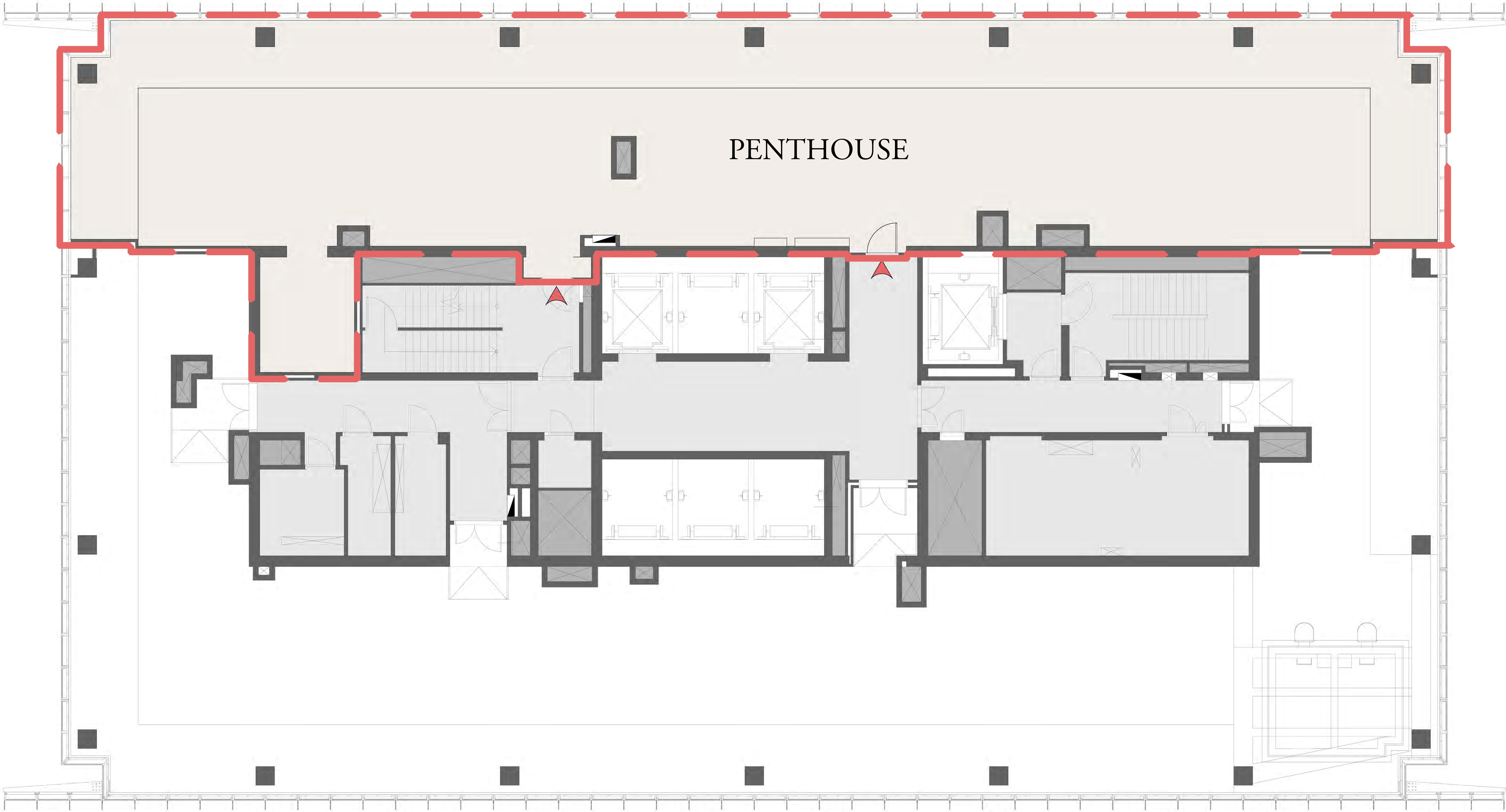
CLEAR HEIGHT (FLOOR TO CEILING) OF LEVEL 57= 3.85M



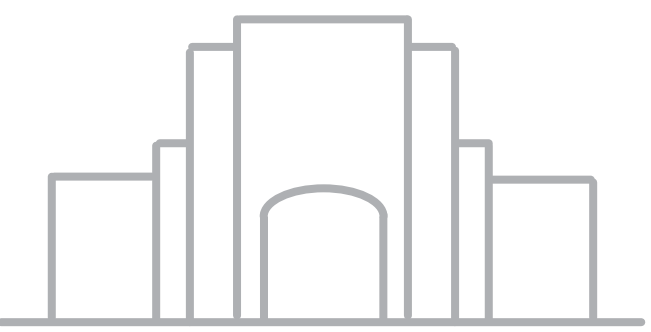
ITHRA DUBAI  
ONE ZA'ABEEL



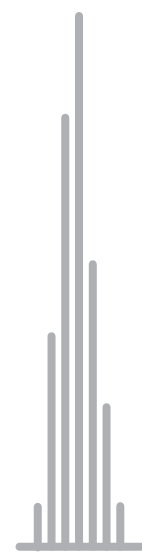
THE DUBAI FRAME  
NORTHERN EMIRATES



ARABIAN GULF



ZAABEEL



DIFC  
BURJ KHALIFA

FLOOR LEVEL 58-RF (PENTHOUSE)

CLEAR HEIGHT (FLOOR TO CEILING)= 7.90M



DISCLAIMER

While One Zaabeel LLC (“the Company”) endeavors to ensure that the information provided in this brochure of the One Za’abeel Project is correct, you acknowledge and agree that the information and materials contained in this brochure, and the terms, conditions, and descriptions that appear, are subject to change in the absolute discretion of the Company. Not all brands, products, services and/or access rights that may be described in this brochure may be available at all times or in all areas.

Your eligibility for particular products, services and/or access rights to any of the facilities (including without limitation pools and gymnasiums) at the One Za’abeel Project is subject to the final determination and acceptance of the Company and/or the Hotel operator (Kerzner International Limited), and any agreement with the Company and/or the Hotel operator (Kerzner International Limited) will be subject only to a written agreement evidencing such.

The information and materials contained herein, including text, graphics, links or other items – are provided on an “as is” and “as available” basis. As such, the Company does not warrant the accuracy, adequacy or completeness of the information and materials and expressly disclaims liability for any errors or omissions that may appear herein. Nothing in this brochure constitutes, is intended to constitute, shall be treated as constituting or shall be deemed to constitute, the Company giving any warranties of any kind, implied, express or statutory, (including but not limited to the warranties of non-infringement of third party rights, title, merchantability, fitness for a particular purpose and where relevant, freedom from computer virus), in conjunction with the information and materials in this brochure and the One Za’abeel Project generally.

To the extent permitted by UAE law, the Company excludes all representations and warranties (whether express or implied by law) in respect of this brochure and the One Za’abeel Project generally. The Company will not be liable to you under any circumstances for any actual, direct, indirect, consequential, economic or special loss or damage howsoever arising in relation to the information and materials contained in this brochure. You release the Company from all claims (whether actual or contingent, whether in the United Arab Emirates or elsewhere) that you may have from time to time against the Company arising from this brochure.

ONE ZA'ABEEL

THE RESIDENCES

04 517 7303  
SALES@ONEZAABEEL.COM

WWW.ONEZAABEEL.COM